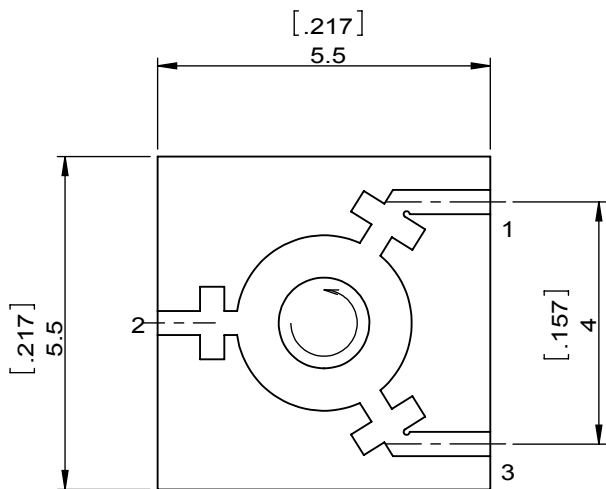
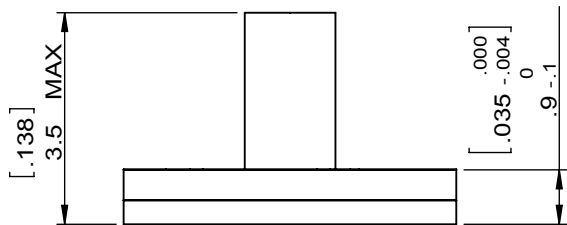
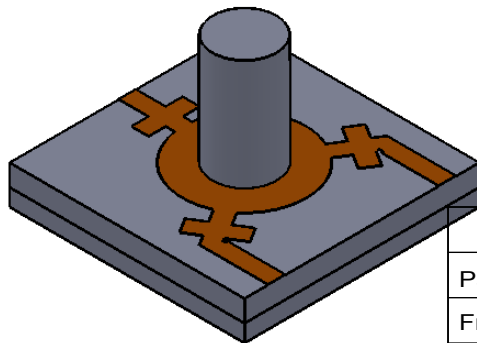


1		2		3		4		5		6	
Document No.	QR4-700-T-003	REV.	A/0	REV.	DESCRIPTION	REVISOR	DATE	APPROVED			
		0		LJ.Zhang	04.03.2014	David					



SPECIFICATIONS

Part's Number	JCS12K0T13K5G0
Frequency(GHz)	12.00~13.50
Direction	-
Insertion Loss(dB)MAX	0.60@25°C(1-2)(2-3) 0.60@-10°C~+85°C
Isolation(dB)MIN	18.0@25°C 17.0@-10°C~+85°C
Return Loss(dB)MIN	18.2@25°C(1-2)(2-3) 16.6@-10°C~+85°C
3rd IMD(dBc)MAX	-
Power FWD/REV/PK(Watt)	3/3/10
Operating Temperature(°C)	-10~+85
Storage Temperature(°C)	-
2nd/3rd Harmonic(dBc)	-
Termination/Attenuator(Watt/dB)	-
Tab(W×LG×THK)(mm[Inch])	-
Additional Notes	-

JQL **JQL Electronic Inc** 500 Lake Cook Road, Suite 350 Deerfield, IL 60015, USA Tel: 1(888)236-9828 Fax: 1(888)823-2902

MATERIAL: -	DWG NO: JCS12K0T13K5G0			
SURFACE TREATMENT: -	DWG BY:	LJ.Zhang	04.03.2014	SACLE
DESCRIPTION: MICRSTRIP	CHK'D BY:			
	APPV'D BY:			8:1
	Unit: mm[inch]	Tolerance: Liner: ±0.25 Anguar: ±0.5°	The First:	A4



This document is the property of JQL Electronic Inc. It cannot be copied, duplicated, used for manufacturing purposes or communicated to third party as a whole or partly, without the written consent of JQL Electronic Inc.