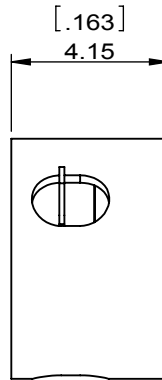
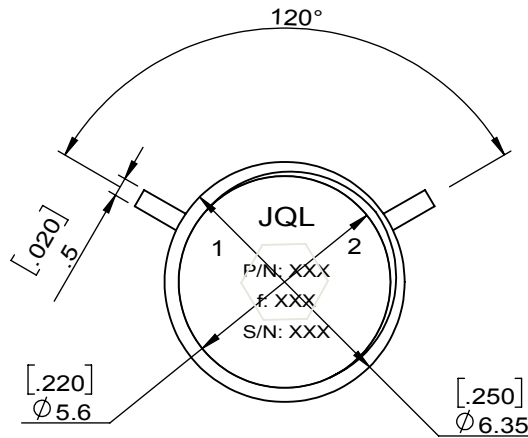
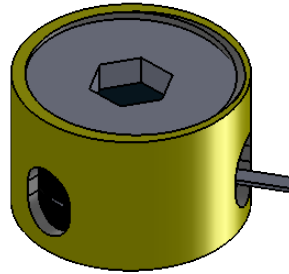
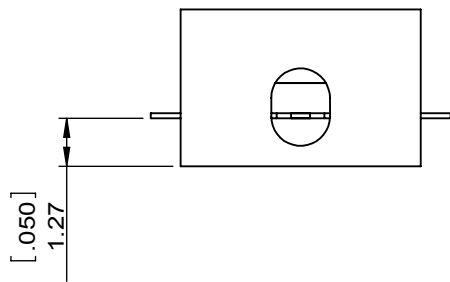


1		2		3		4		5		6	
Document No.	QR4-700-T-003	REV.	A/0	REV.	DESCRIPTION	REVISOR	DATE	APPROVED			
REV.	A/0	0		YI.SHI	07.02.2021	HC.Qiu					



SPECIFICATIONS	
Part's Number	JIM9050T9450G0
Frequency(GHz)	9.050~9.450
Direction	CW
Insertion Loss(dB)MAX	0.40
Isolation(dB)MIN	20.0
Return Loss(dB)MIN	19.0
3rd IMD(dBc)MAX	-
Power FWD/REV/PK(Watt)	5/0.5/-
Operating Temperature(°C)	-40~+85
Storage Temperature(°C)	-
2nd/3rd Harmonic(dBc)	-
Termination/Attenuator(Watt/dB)	-
Tab(W×LG×THK)(mm[Inch])	0.5[.020]×1.3[.051]×0.12[.005]
Additional Notes	GOLD PLTED HOUSING; GOLD PLTED CIRCUIT

<b>JQL JQL Technologies Corporation</b>				
<b>MATERIAL:</b> STEEL		<b>DWG NO:</b> JIM9050T9450G0		
<b>SURFACE TREATMENT:</b> GOLD PLTED		DWG BY:	YI.SHI	07.02.2021
<b>DESCRIPTION:</b> SMT ISOLATOR		CHK'D BY:		SACLE
		APPV'D BY:		5:1
		Unit: mm[inch]	Tolerance: Liner: ±0.25 Anguar: ±0.5°	The First: 
				A4



This document is the property of JQL Technologies Corporation. It cannot be copied, duplicated, used for manufacturing purposes or communicated to third party as a whole or partly, without the written consent of JQL Electronic Inc.