

Stock Number  
402010259

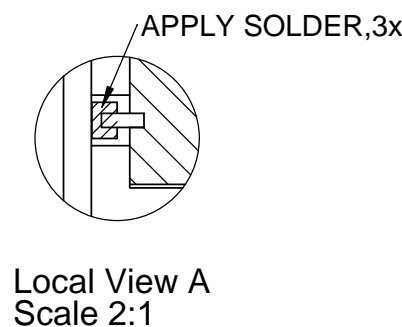
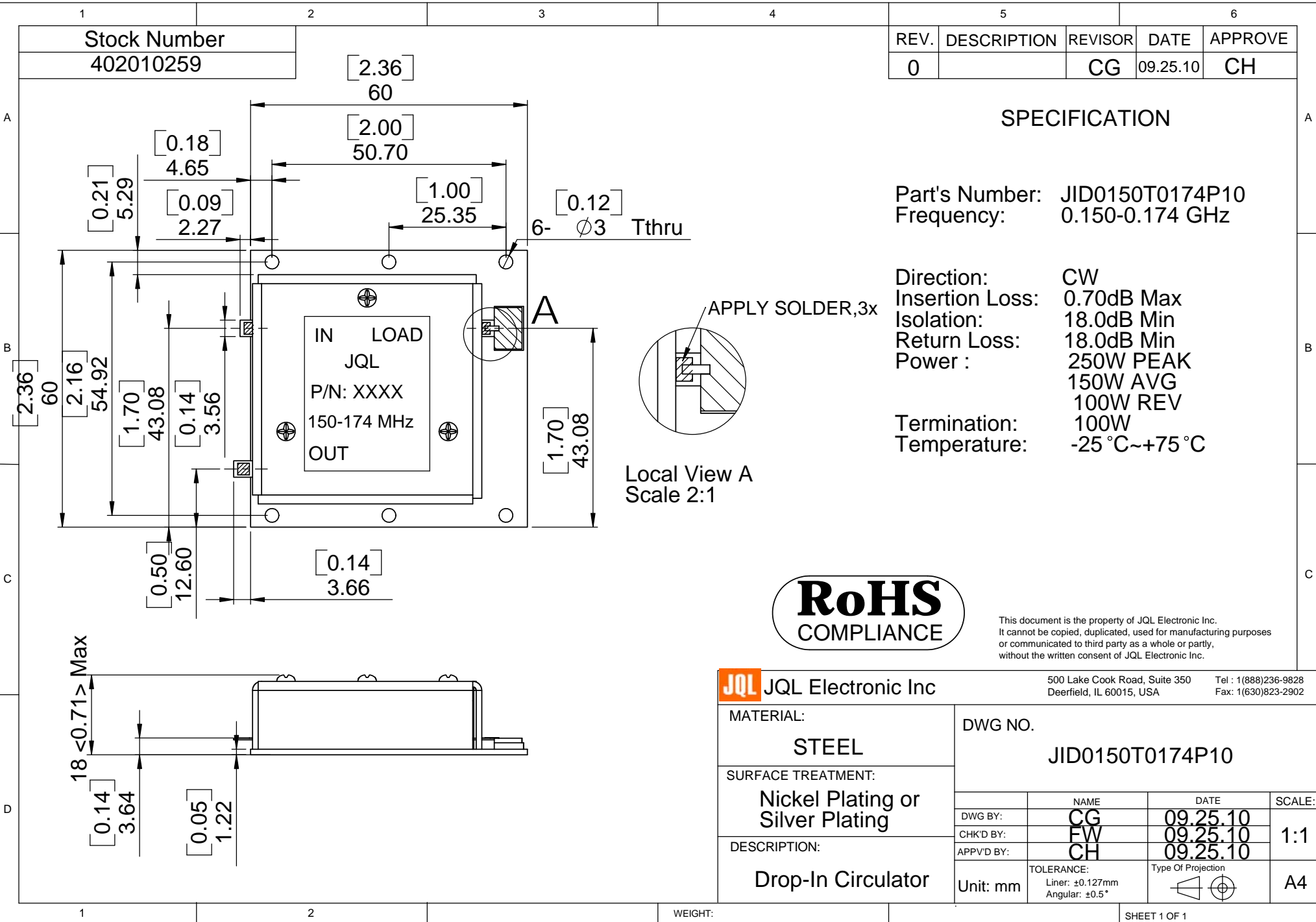
REV.	DESCRIPTION	REVISOR	DATE	APPROVE
0		CG	09.25.10	CH

**SPECIFICATION**

Part's Number: JID0150T0174P10  
Frequency: 0.150-0.174 GHz

Direction: CW  
Insertion Loss: 0.70dB Max  
Isolation: 18.0dB Min  
Return Loss: 18.0dB Min  
Power : 250W PEAK  
150W AVG  
100W REV

Termination: 100W  
Temperature: -25°C~+75°C



This document is the property of JQL Electronic Inc. It cannot be copied, duplicated, used for manufacturing purposes or communicated to third party as a whole or partly, without the written consent of JQL Electronic Inc.

<b>JQL</b> JQL Electronic Inc		500 Lake Cook Road, Suite 350 Deerfield, IL 60015, USA		Tel : 1(888)236-9828 Fax: 1(630)823-2902	
MATERIAL: <b>STEEL</b>		DWG NO. <b>JID0150T0174P10</b>			
SURFACE TREATMENT: <b>Nickel Plating or Silver Plating</b>		NAME <b>CG</b>		DATE <b>09.25.10</b>	
DESCRIPTION: <b>Drop-In Circulator</b>		CHK'D BY: <b>FW</b>		DATE <b>09.25.10</b>	
		APPVD BY: <b>CH</b>		DATE <b>09.25.10</b>	
Unit: mm		TOLERANCE: Liner: ±0.127mm Angular: ±0.5°		Type Of Projection 	

WEIGHT:

SHEET 1 OF 1