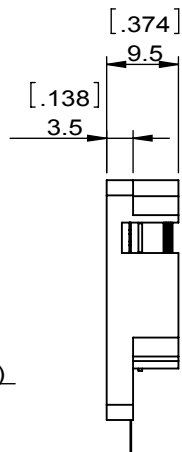
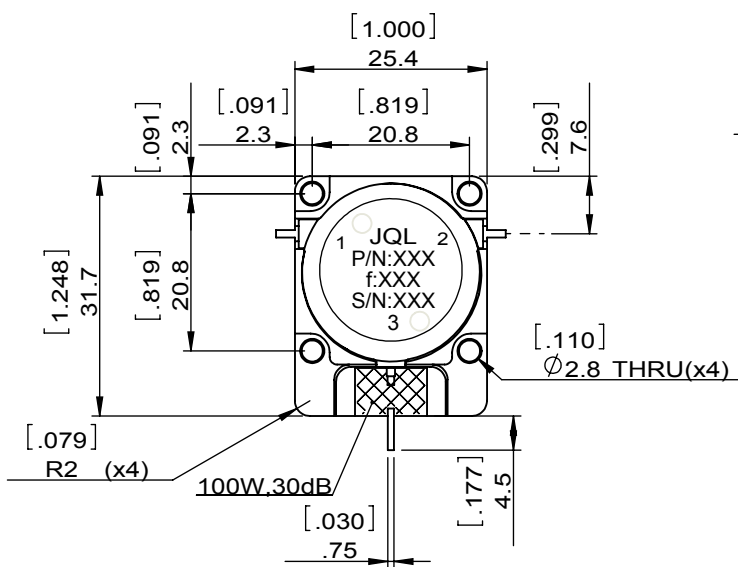
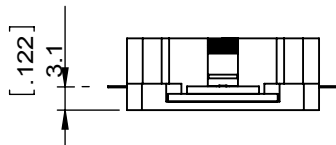
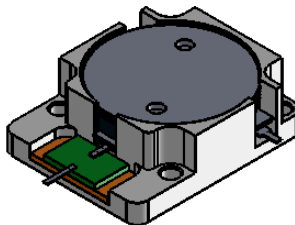


1		2		3		4		5		6	
Document No.	QR4-700-T-003	REV.	A/0	REV.	DESCRIPTION	REVISOR	DATE	APPROVED			
				0		LJ.Zhang	06.25.2015	David			



SPECIFICATIONS	
Part's Number	JID0617T0652M10A3
Frequency(GHz)	0.617~0.652
Direction	CW
Insertion Loss(dB)MAX	0.25
Isolation(dB)MIN	24.0
Return Loss(dB)MIN	24.0
3rd IMD(dBc)MAX	-
Power FWD/REV/PK(Watt)	100/70/-
Operating Temperature(°C)	-20~+85
Storage Temperature(°C)	-
2nd/3rd Harmonic(dBc)	-
Termination/Attenuator(Watt/dB)	100/30
Tab(W×LG×THK)(mm[Inch])	1.0[.039]x2.5[0.098]x0.2[.008]
Additional Notes	Impedance:50 ohms nominal-

<b>JQL</b> JQL Electronic Inc				
<b>MATERIAL:</b> STEEL		<b>DWG NO:</b> JID0617T0652M10A3		
<b>SURFACE TREATMENT:</b> NICKEL PLATING		DWG BY:	LJ.Zhang	01.23.2015
<b>DESCRIPTION:</b> DROP-IN ISOLATOR		CHK'D BY:		SCALE
		APPV'D BY:		1:1
		Unit: mm[inch]	Tolerance: Liner: ±0.25 Anguar: ±0.5°	The First: 
				A4



This document is the property of JQL Electronic Inc. It cannot be copied, duplicated, used for manufacturing purposes or communicated to third party as a whole or partly, without the written consent of JQL Electronic Inc.