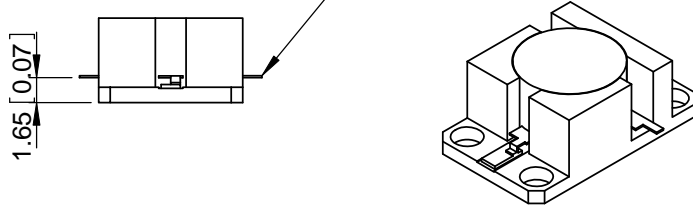


Stock Number

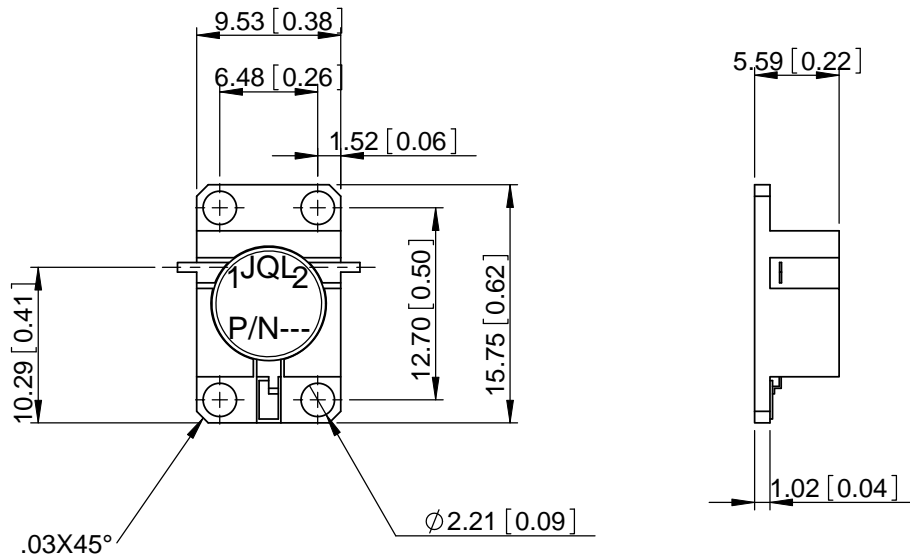
REV.	DESCRIPTION	REVISOR	DATE	APPROVE
0		XG	01.01.10	CH

0.64[.025]w X1.78[.07]±0.51[.02] L
X0.13[.005]±0.03[.001]THK



SPECIFICATION

Part's Number: JID9200T9900JM2
 Frequency: 9.2~9.9GHz
 Insertion Loss: 0.40dB MAX
 Isolation: 21.0dBMIN
 VSWR: 1.25dB MAX
 PWR FWD PK/AVG: 25W/2.5W
 TERMINATION: 2W
 Temperature: -40°C~ 85°C



This document is the property of JQL Electronic Inc.
 It cannot be copied, duplicated, used for manufacturing purposes
 or communicated to third party as a whole or partly,
 without the written consent of JQL Electronic Inc.

JQL JQL Electronic Inc		500 Lake Cook Road, Suite 350 Deerfield, IL 60015, USA		Tel : 1(888)236-9828 Fax: 1(630)823-2902	
MATERIAL:	DWG NO. JID9200T9900JM2				
SURFACE TREATMENT:					
DESCRIPTION: DROP-IN ISOLATOR	NAME	DATE	SCALE:		
	DWG BY: LS	08.25.11	1:1		
	CHK'D BY: MH	08.25.11			
	APPV'D BY: CH	08.25.11			
Unit: mm	2 PLACE DECIMALS: ± 0.25 3 Dimension between hole: ± 0.127 Angular: ±0.5°		Type Of Projection 		A4

WEIGHT: