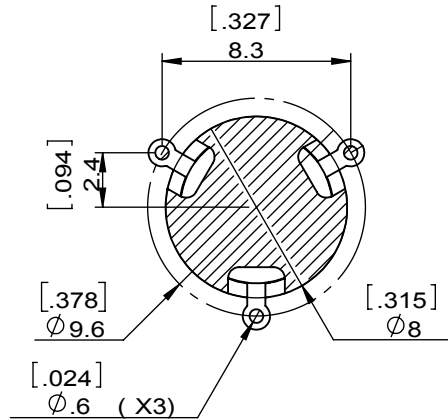
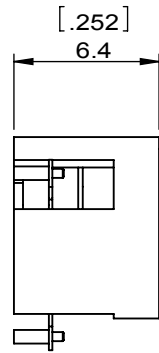
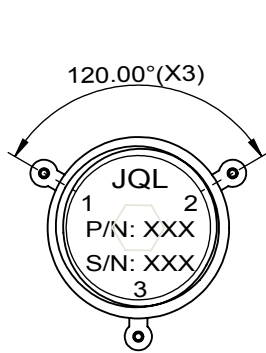
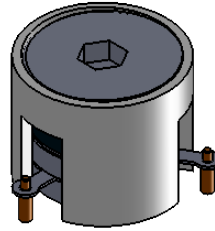
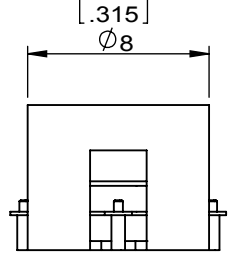
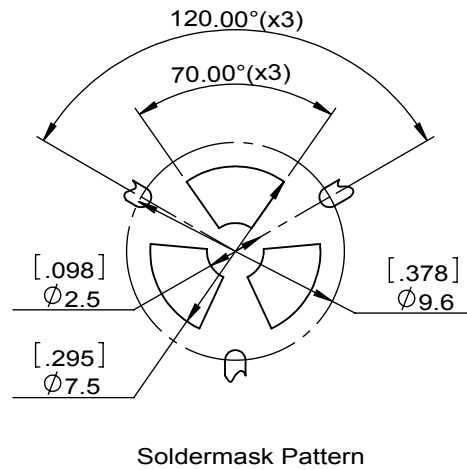
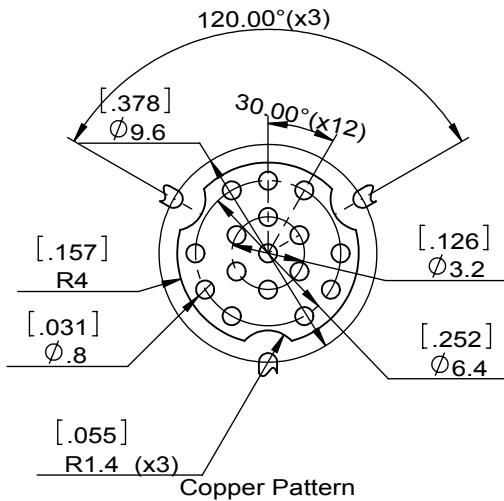


1	2
Document No.	QR4-700-T-003
REV.	A/0

4	5	6		
REV.	DESCRIPTION	REVISOR	DATE	APPROVED
0		Hu.Jiang	10.15.2018	HC.Qiu



SPECIFICATIONS	
Part's Number	JCM4900T5900PC5
Frequency(GHz)	4.900~5.900
Direction	CW
Insertion Loss(dB)MAX	0.5
Isolation(dB)MIN	17.0
Return Loss(dB)MIN	17.0
3rd IMD(dBc)MAX	
Power FWD/REV/PK(Watt)	5/5/-
Operating Temperature(°C)	-40~+85
Storage Temperature(°C)	
2nd/3rd Harmonic(dBc)	
Termination/Attenuator(Watt/dB)	
Tab(W×LG×THK)(mm[Inch])	-
Additional Notes	



JQL JQL Electronic Inc				
MATERIAL: STEEL		DWG NO: JCM4900T5900PC5		
SURFACE TREATMENT: SILVER PLATING		DWG BY:	Hu.Jiang	10.15.2018
DESCRIPTION: SMT CIRCULATOR		CHK'D BY:		SCALE
		APPV'D BY:		3:1
		Unit: mm[inch]	Tolerance: Liner: ±0.25 Anguar: ±0.5°	The First:
				A4



This document is the property of JQL Electronic Inc. It cannot be copied, duplicated, used for manufacturing purposes or communicated to third party as a whole or partly, without the written consent of JQL Electronic Inc.