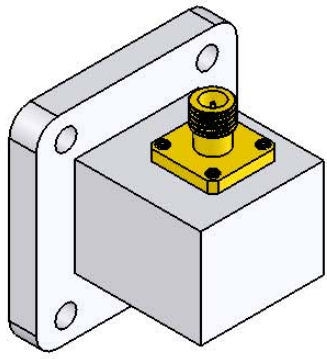
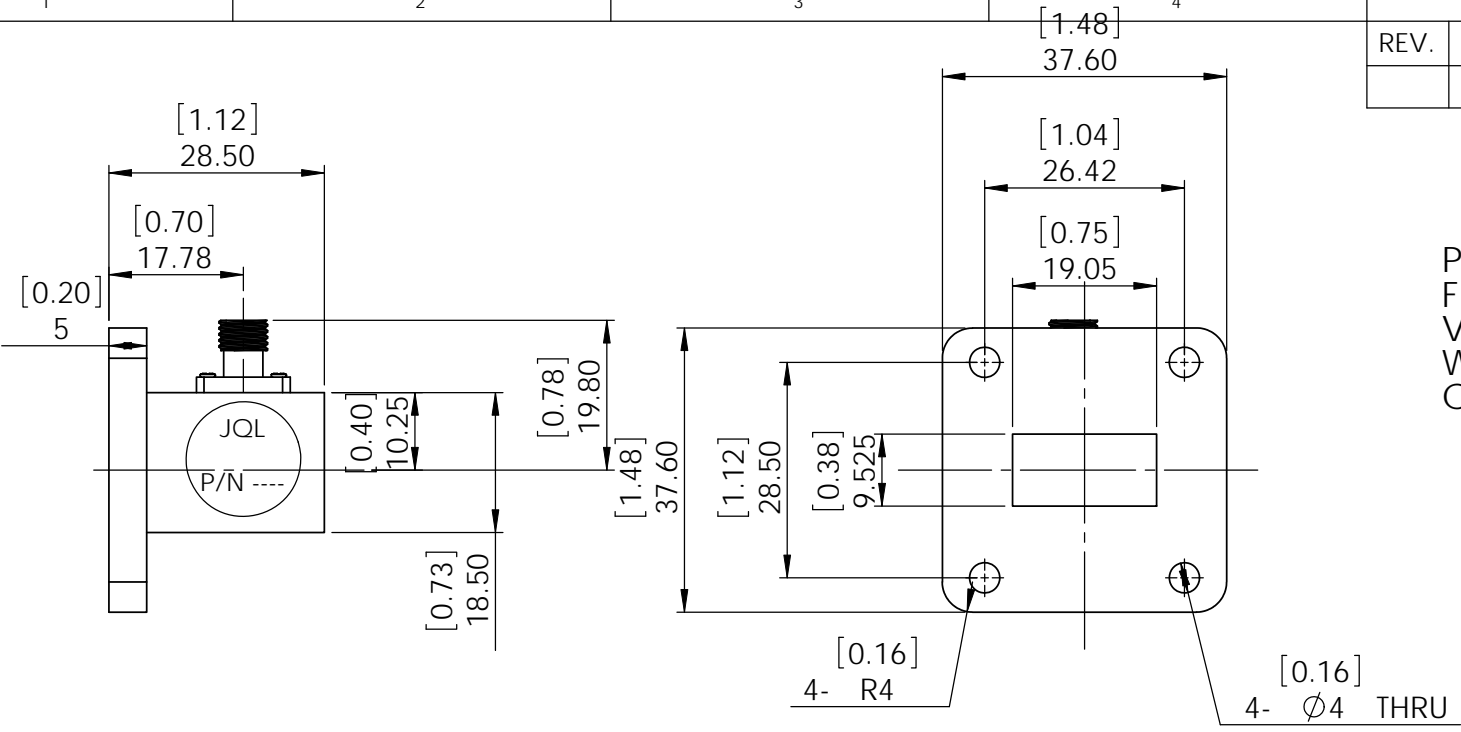


REV.	DESCRIPTION	REVISOR	DATE	APPROVE

SPEICIFICATIONS

P/N: JACWR75SF
 FREQ: 10~15GHz
 VSWR: 1.2:1 MAX
 WAVEGUIDE: WR75
 CONNECTOR: SMA-F



This document is the property of JQL Electronic Inc. It cannot be copied, duplicated, used for manufacturing purposes or communicated to third party as a whole or partly, without the written consent of JQL Electronic Inc.

JQL JQL Electronic Inc 500 Lake Cook Road, Suite 350 Deerfield, IL 60015, USA Tel: 1(888)236-9828 Fax: 1(630)823-2902

MATERIAL: ALUMINUM	DWG NO. JACWR75SF			
SURFACE TREATMENT:				
DESCRIPTION: WAVEGUIDE COAX ADAPTOR	NAME	DATE	SIGNATURE	REV:
	DWG BY: SY	10.31.08		
	CHK'D BY: GC	10.31.08		0
	APPV'D BY: JZ	10.31.08		
	TOLERANCE Liner: ±0.1mm Angular: ±0.5°		Q.A	A4