

5		6		
REV.	DESCRIPTION	REVISOR	DATE	APPROVE

**SPECIFICATIONS**

P/N: JBPCF1800T1830SFNF

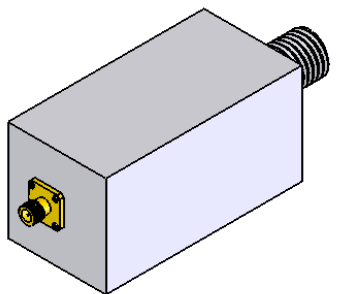
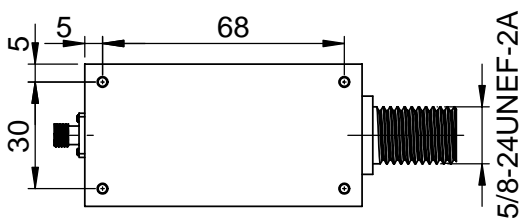
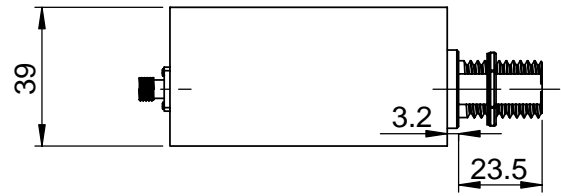
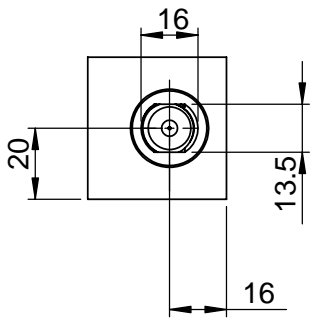
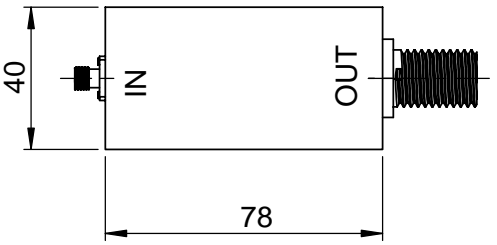
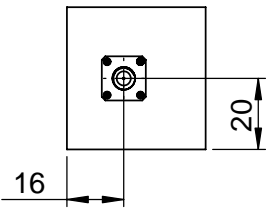
FREQ: 1.8~1.83GHz  
 INS LOSS: 0.3dB TYP/0.4dB MAX  
 RIPPLE: 0.15dB MAX  
 RETURN LOSS: 20dB MIN

2ND REJECTION: 30dB@1.7GHz  
 3RD REJECTION: 40dB @1.92GHz  
 4RD REJECTION: 40dB @3.6GHz  
 5RD REJECTION: 40dB @5.4GHz

PWR: 20W MAX  
 TEMPERATURE OPERATING: -40C~+80C  
 IMPEDANCE: 50OHM

CONNECTOR: SMA-F INPUT  
 N-F OUTPUT  
 WATERPROOF: IP 67 ( N CONNECTOR ONLY)

This document is the property of JQL Electronic Inc. It cannot be copied, duplicated, used for manufacturing purposes or communicated to third party as a whole or partly, without the written consent of JQL Electronic Inc.



<b>JQL JQL Electronic Inc</b>		500 Lake Cook Road, Suite 350 Deerfield, IL 60015, USA		Tel : 1(888)236-9828 Fax: 1(630)823-2902	
MATERIAL: ALUMINA		DWG NO. JBPCF1800T1830SFNF			
SURFACE TREATMENT: GRAY EPOXY COATING		NAME		DATE	SIGNATURE
DESCRIPTION: BANDPASS CAVITY FILTER		DWG BY:	SY	1.5.09	REV:
		CHK'D BY:	GC	1.5.09	0
		APPV'D BY:	JZ	1.5.09	A4
		TOLERANCE		Q.A	
		Liner: ±0.1mm			
		Angular: ±0.5°			