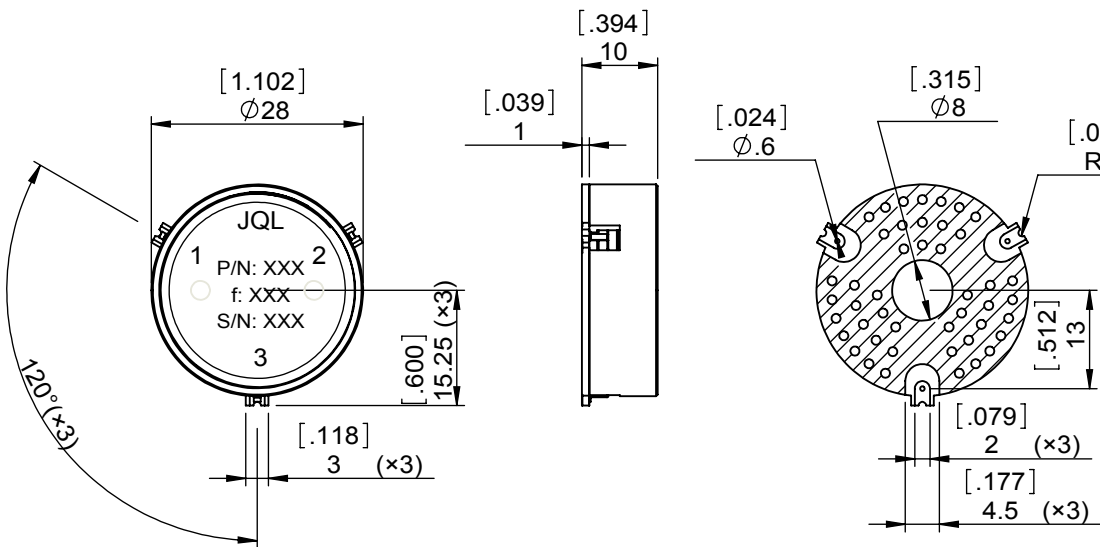
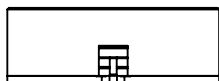
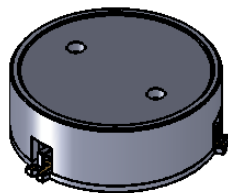


1		2		3		4		5		6	
Document No.	QR4-700-T-003	REV.	0	DESCRIPTION		REVISOR	LJ.Zhang	DATE	10.23.2013	APPROVED	David
REV.	A/0										



SPECIFICATIONS	
Part's Number	JCM0380T0430A10
Frequency(GHz)	0.380~0.430
Direction	CW
Insertion Loss(dB)MAX	0.70
Isolation(dB)MIN	18.0
Return Loss(dB)MIN	18.0
3rd IMD(dBc)MAX	-
Power FWD/REV/PK(Watt)	100/100/-
Operating Temperature($^{\circ}$ C)	-20~+85
Storage Temperature($^{\circ}$ C)	-
2nd/3rd Harmonic(dBc)	-
Termination/Attenuator(Watt/dB)	-
Tab(W \times LG \times THK)(mm[Inch])	-
Additional Notes	-

JQL JQL Electronic Inc 500 Lake Cook Road, Suite 350 Deerfield, IL 60015, USA Tel: 1(888)236-9828 Fax: 1(888)823-2902

MATERIAL: STEEL	DWG NO: JCM0380T0430A10			
SURFACE TREATMENT: NICKEL PLATING	DWG BY:	LJ.Zhang	10.23.2013	SACLE
	CHK'D BY:			
DESCRIPTION: SMT CIRCULATOR	APPV'D BY:			1:1
	Unit: mm[inch]	Tolerance: Liner: ± 0.25 Anguar: $\pm 0.5^{\circ}$	The First:	A4



This document is the property of JQL Electronic Inc. It cannot be copied, duplicated, used for manufacturing purposes or communicated to third party as a whole or partly, without the written consent of JQL Electronic Inc.