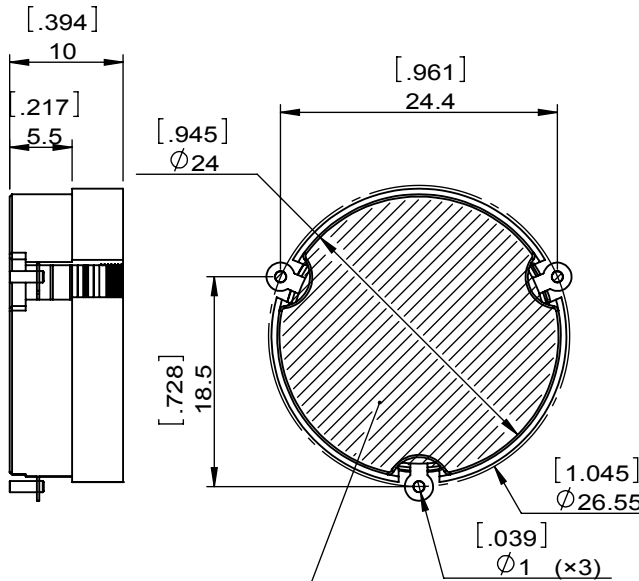
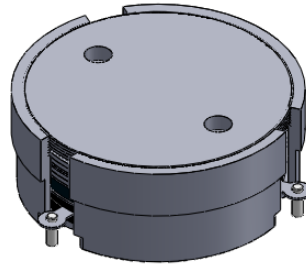
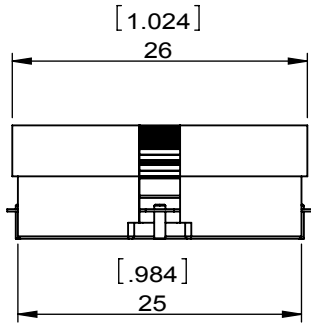
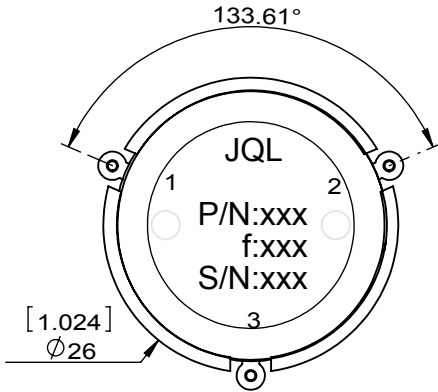


1	2
Document No.	QR4-700-T-003
REV.	A/0

3	4	5	6
REV.	DESCRIPTION	REVISOR	DATE
0		LJ.Zhang	07.30.2015
			APPROVED
			David



SPECIFICATIONS	
Part's Number	JCM0728T0756PN10
Frequency(GHz)	0.728~0.756
Direction	CW
Insertion Loss(dB)MAX	0.30
Isolation(dB)MIN	20.0
Return Loss(dB)MIN	20.0
3rd IMD(dBc)MAX	-75 2×43dBm
Power FWD/REV/PK(Watt)	100/100/-
Operating Temperature(°C)	-40~+85
Storage Temperature(°C)	-
2nd/3rd Harmonic(dBc)	-
Termination/Attenuator(Watt/dB)	-
Tab(W×LG×THK)(mm[Inch])	-
Additional Notes	-



**JQL JQL Electronic Inc**

**MATERIAL:**  
STEEL

**DWG NO:**  
JCM0728T0756PN10

**SURFACE TREATMENT:**  
SILVER PLATING

DWG BY:	LJ.Zhang	07.30.2015	SCALE
---------	----------	------------	-------

**DESCRIPTION:**  
SMT CIRCULATOR

CHK'D BY:			3:2
APPV'D BY:			
Unit: mm[inch]	Tolerance: Liner: ±0.25 Anguar: ±0.5°	The First:	A4



This document is the property of JQL Electronic Inc. It cannot be copied, duplicated, used for manufacturing purposes or communicated to third party as a whole or partly, without the written consent of JQL Electronic Inc.

WEIGHT: