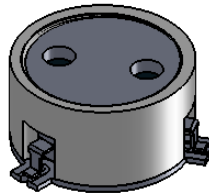
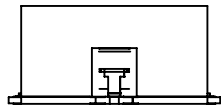
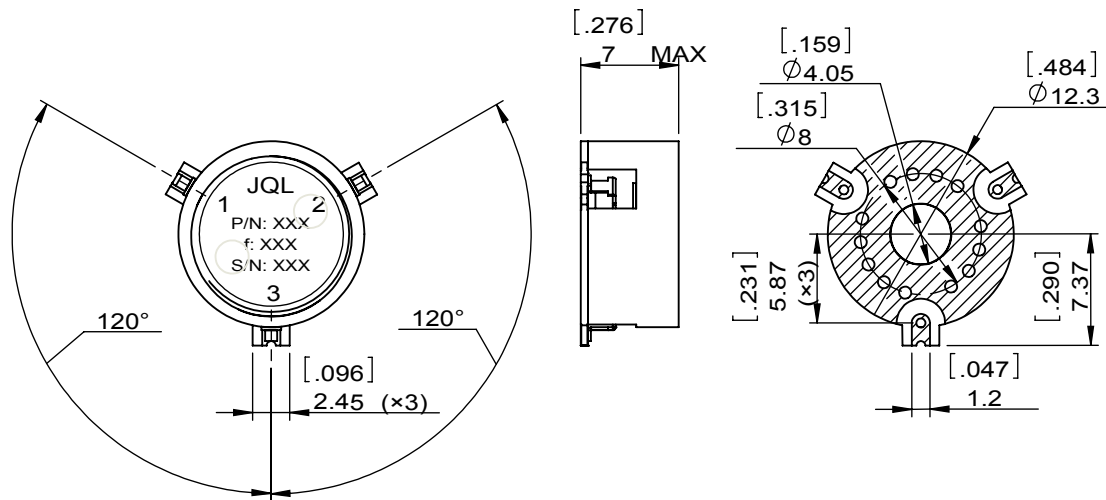


1		2		3		4		5		6	
Document No.	QR4-700-T-003	REV.	A/0	REV.	DESCRIPTION	REVISOR	DATE	APPROVED			
		0		ZC.Wu	10.10.2014	David					



SPECIFICATIONS	
Part's Number	JCM3100T3500VM3R
Frequency(GHz)	3.100~3.500
Direction	CW
Insertion Loss(dB)MAX	0.35
Isolation(dB)MIN	18.0/20.0 typ.
Return Loss(dB)MIN	18.0/20.0 typ.
3rd IMD(dBc)MAX	-
Power FWD/REV/PK(Watt)	30/30/150 (0.3msec pulse with a duty cycle of 20%)
Operating Temperature(°C)	-40~+95
Storage Temperature(°C)	-54~+125
2nd/3rd Harmonic(dBc)	-
Termination/Attenuator(Watt/dB)	-
Tab(W×LG×THK)(mm[Inch])	-
Additional Notes	-



JQL JQL Electronic Inc				
MATERIAL: STEEL		DWG NO: JCM3100T3500VM3R		
SURFACE TREATMENT: SILVER PLATING		DWG BY:	ZC.Wu	10.10.2014
DESCRIPTION: SMT CIRCULATOR		CHK'D BY:		SCALE
		APPV'D BY:		2:1
		Unit: mm[inch]	Tolerance: Liner: ±0.25 Anguar: ±0.5°	The First:
				A4



This document is the property of JQL Electronic Inc. It cannot be copied, duplicated, used for manufacturing purposes or communicated to third party as a whole or partly, without the written consent of JQL Electronic Inc.