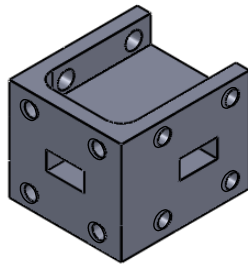
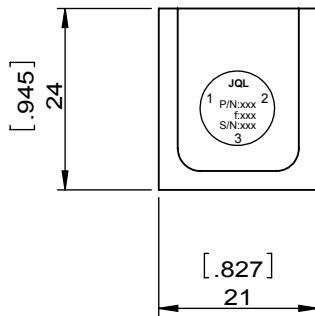
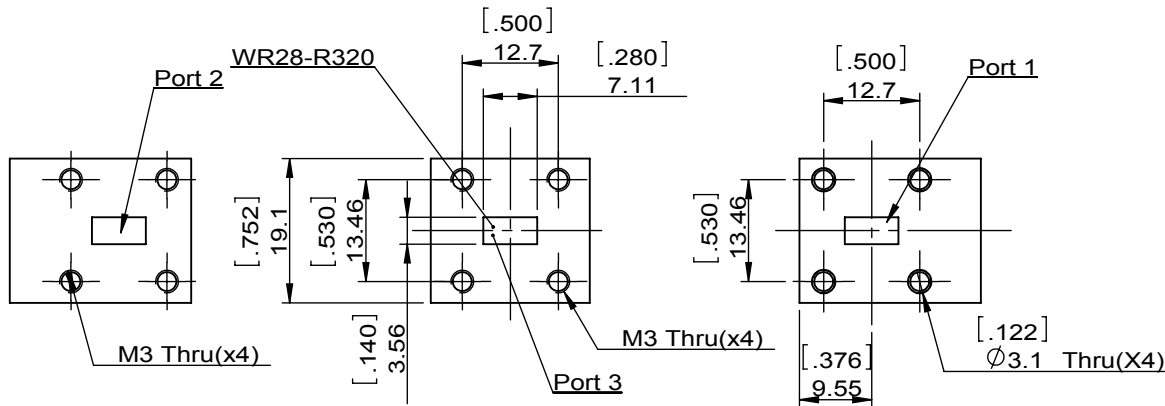


1		2		3		4		5		6	
Document No.	QR4-700-T-003	REV.	A/0	REV.	DESCRIPTION	REVISOR	DATE	APPROVED			
		0					08.07.2015	David			



SPECIFICATIONS	
Part's Number	JCWR28-21A-TBD
Frequency(GHz)	26.50~40.00
Up To 30% Bandwidth	
Direction	CW
Insertion Loss(dB)MAX	0.35
Isolation(dB)MIN	21.0
Return Loss(dB)MIN	20.0
3rd IMD(dBc)MAX	
Power FWD/REV/PK(Watt)	5/5/
Operating Temperature(°C)	-40~+80
Storage Temperature(°C)	
2nd/3rd Harmonic(dBc)	-
Termination/Attenuator(Watt/dB)	
Tab(W×LG×THK)(mm[Inch])	
Additional Notes	-

JQL Electronic Inc				
MATERIAL: ALUM	DWG NO: JCWR28-21A-TBD			
SURFACE TREATMENT: CHEM FILM	DWG BY:	ZC.Wu	08.07.2015	SCALE
DESCRIPTION: WAVE GUIDE CIRCULATOR	CHK'D BY:			1:1
	APP'V'D BY:			
Unit: mm[inch]	Tolerance: Liner: ±0.25 Anguar: ±0.5°	The First:		A4



This document is the property of JQL Electronic Inc. It cannot be copied, duplicated, used for manufacturing purposes or communicated to third party as a whole or partly, without the written consent of JQL Electronic Inc.