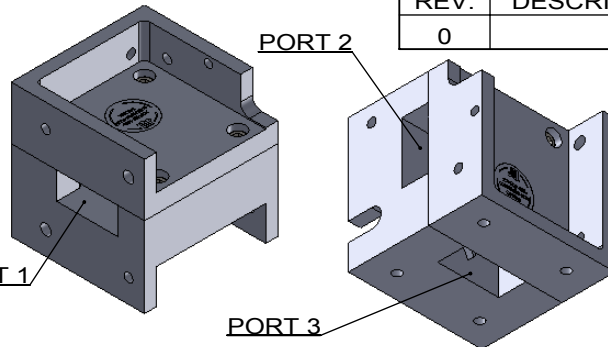
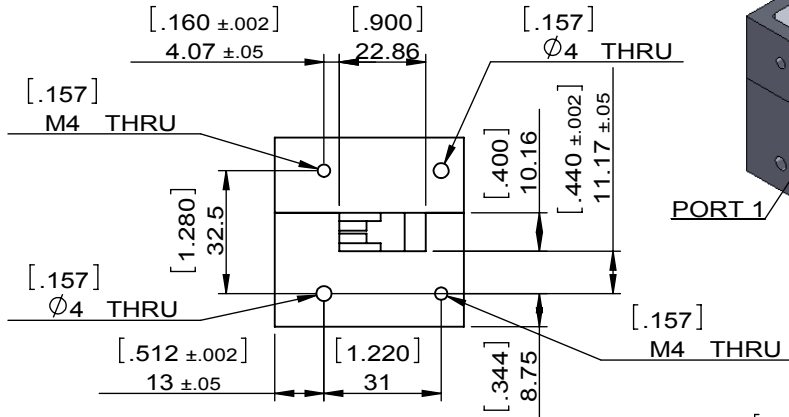
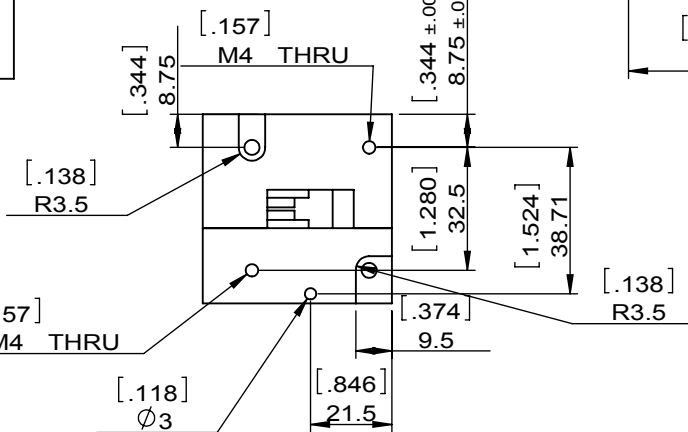
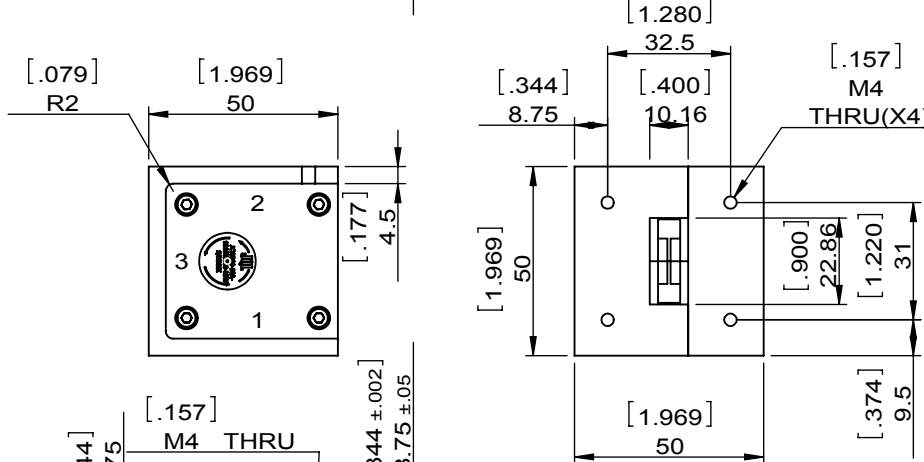
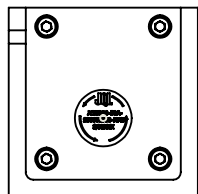
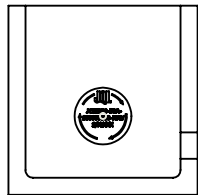


1		2		3		4		5		6	
Document No.	QR4-700-T-003	REV.	A/0	REV.	DESCRIPTION	REVISOR	DATE	APPROVED			
				0		ZC.Wu	09.16.2014	David			



SPECIFICATIONS	
Part's Number	JCWR90-50A-9300T9500
Frequency(GHz)	9.300~9.500
Direction	
Insertion Loss(dB)MAX	0.30
Isolation(dB)MIN	23.0
Return Loss(dB)MIN	21.0
3rd IMD(dBc)MAX	
Power FWD/REV/PK(Watt)	30/30/30000
Operating Temperature(°C)	-30~+75
Storage Temperature(°C)	
2nd/3rd Harmonic(dBc)	-
Termination/Attenuator(Watt/dB)	
Tab(W×LG×THK)(mm[Inch])	
Additional Notes	-



This document is the property of JQL Electronic Inc. It cannot be copied, duplicated, used for manufacturing purposes or communicated to third party as a whole or partly, without the written consent of JQL Electronic Inc.

JQL JQL Electronic Inc 3501 Algonquin Road, Ste 230 1(888) 236-9828
Rolling Meadows, IL 60008 (630) 823-2902

MATERIAL: AL	DWG NO: JCWR90-50A-9300T9500			
SURFACE TREATMENT: CHEM FILM	DWG BY:	ZC.Wu	09.16.2014	SCALE
	CHK'D BY:			1:2
DESCRIPTION: WAVEGUIDE CRECULATOR	APP'VD BY:			
	Unit: mm[inch]	Tolerance: Liner: ±0.25 Anguar: ±0.5°	The First:	A4