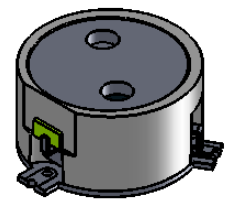
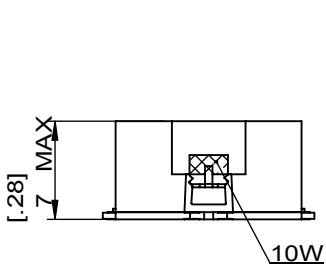
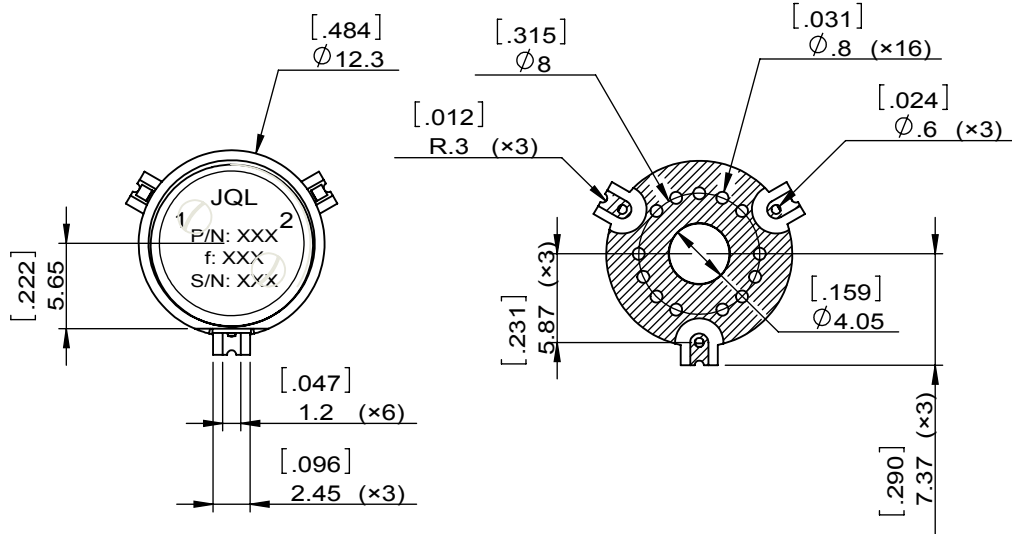


1		2		3		4		5		6	
Document No.	QR4-700-T-003	REV.	A/0	REV.	DESCRIPTION	REVISOR	DATE	APPROVED			
		0		ZC.Wu	03.04.2016	David					



SPECIFICATIONS	
Part's Number	JIM12K7T13K3VM1
Frequency(GHz)	12.700~13.300
Direction	CW
Insertion Loss(dB)MAX	0.5
Isolation(dB)MIN	18.0
Return Loss(dB)MIN	19.0
3rd IMD(dBc)@32dBm Pout-any spacing	-65dBc (Design to Meet)
3rd IMD imbalance (max)@5MHz spacing	2dB(Design to Meet)
Power FWD/REV/PK(Watt)	20/10/-(Design to Meet)
Operating Temperature(°C)	-40~+85
Storage Temperature(°C)	-45~85
Operating Humidity Range	0~90%RH(non condensing)
Termination/Attenuator(Watt/dB)	10/-
Tab(W×LG×THK)(mm[Inch])	-
Additional Notes	-



This document is the property of JQL Electronic Inc. It cannot be copied, duplicated, used for manufacturing purposes or communicated to third party as a whole or partly, without the written consent of JQL Electronic Inc.

JQL JQL Electronic Inc				
MATERIAL: STEEL		DWG NO: JIM12K7T13K3VM1		
SURFACE TREATMENT: NICKEL PLATING OR SILVER PLATING		DWG BY:	ZC.Wu	03.04.2016
DESCRIPTION: SMT ISOLATOR		CHK'D BY:		SCALE
		APPV'D BY:		2:1
		Unit: mm[inch]	Tolerance: Liner: ±0.25 Anguar: ±0.5°	The First:
				A4