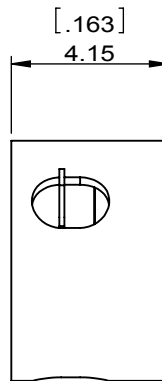
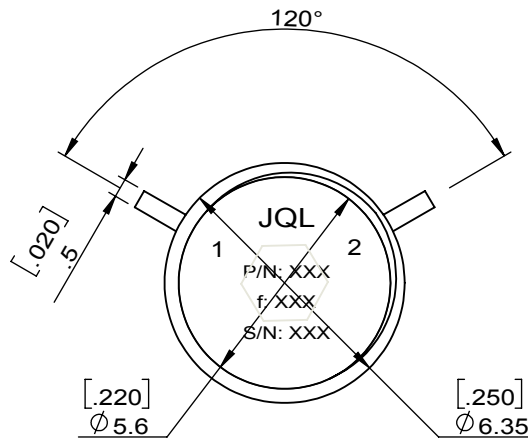
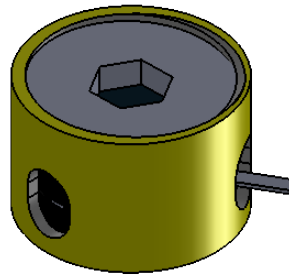
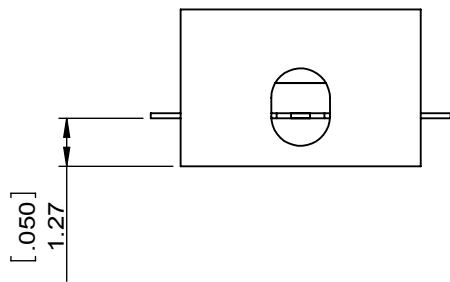


1		2		3		4		5		6	
Document No.	QR4-700-T-003	REV.	A/0	REV.	DESCRIPTION	REVISOR	DATE	APPROVED			
				0		YI.SHI	07.02.2021	HC.Qiu			



SPECIFICATIONS	
Part's Number	JIM9500T10K0G0
Frequency(GHz)	9.500~10.00
Direction	CW
Insertion Loss(dB)MAX	0.40
Isolation(dB)MIN	20.0
Return Loss(dB)MIN	20.0
3rd IMD(dBc)MAX	-
Power FWD/REV/PK(Watt)	5/0.5/-
Operating Temperature(°C)	-40~+85
Storage Temperature(°C)	-
2nd/3rd Harmonic(dBc)	-
Termination/Attenuator(Watt/dB)	-
Tab(W×LG×THK)(mm[Inch])	0.5[.019]×1.3[.051]×0.12[.005]
Additional Notes	GOLD PLATED HOUSING; GOLD PLATED CIRCUIT

JQL JQL Technologies Corporation				
MATERIAL: STEEL		DWG NO: JIM9500T10K0G0		
SURFACE TREATMENT: GOLD PLATED		DWG BY:	YI.SHI	07.02.2021
DESCRIPTION: SMT ISOLATOR		CHK'D BY:		SACLE
		APPV'D BY:		5:1
		Unit: mm[inch]	Tolerance: Liner: ±0.25 Anguar: ±0.5°	The First:
				A4



This document is the property of JQL Technologies Corporation. It cannot be copied, duplicated, used for manufacturing purposes or communicated to third party as a whole or partly, without the written consent of JQL Electronic Inc.