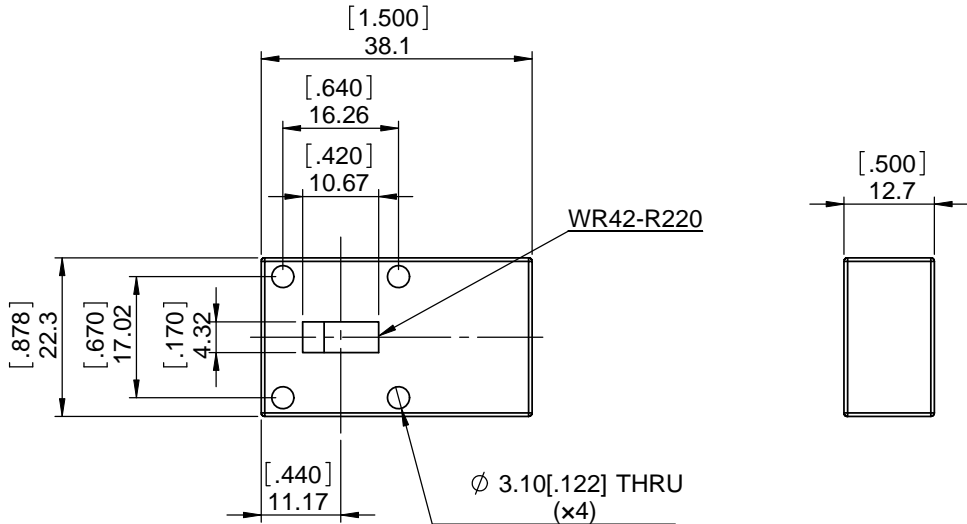
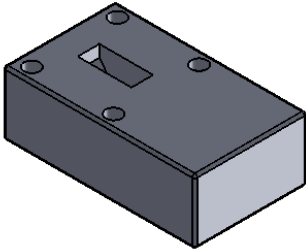


1	2	3	4	5	6
Document No.	QR4-700-T-003				
REV.	A/0				

REV.	DESCRIPTION	REVISOR	DATE	APPROVED
0		LJ.Zhang	05.13.2013	CH



SPECIFICATIONS	
Part's Number	J1WR42-12.7C-17K7T23K6
Frequency(GHz)	17.7~23.6
Direction	CW
Insertion Loss(dB)MAX	0.65
Isolation(dB)MIN	15.0
Return Loss(dB)MIN	15.0
3rd IMD(dBc)MAX	-
Power FWD/REV/PK(Watt)	-5/1/250
Operating Temperature(°C)	--40~+80
Storage Temperature(°C)	-
2nd/3rd Harmonic(dBc)	-
Termination/Attenuator(Watt/dB)	-
Tab(WxLGxTHK)(mm[Inch])	-
Additional Notes	-

JQL JQL Electronic Inc 500 Lake Cook Road, Suite 350 Deerfield, IL 60015, USA Tel: 1(888)236-9828 Fax: 1(888)823-2902

MATERIAL:	DWG NO:			
SURFACE TREATMENT:	DWG BY: LJ.Zhang	05.13.2013	SACLE	1:1
DESCRIPTION:	CHK'D BY:			
WAVEGUIDE ISOLATOR	APPV'D BY:			A4
	Unit: mm[inch]	Tolerance: Liner: ±0.25 Anguar: ±0.5°	The First:	



This document is the property of JQL Electronic Inc. It cannot be copied, duplicated, used for manufacturing purposes or communicated to third party as a whole or partly, without the written consent of JQL Electronic Inc.