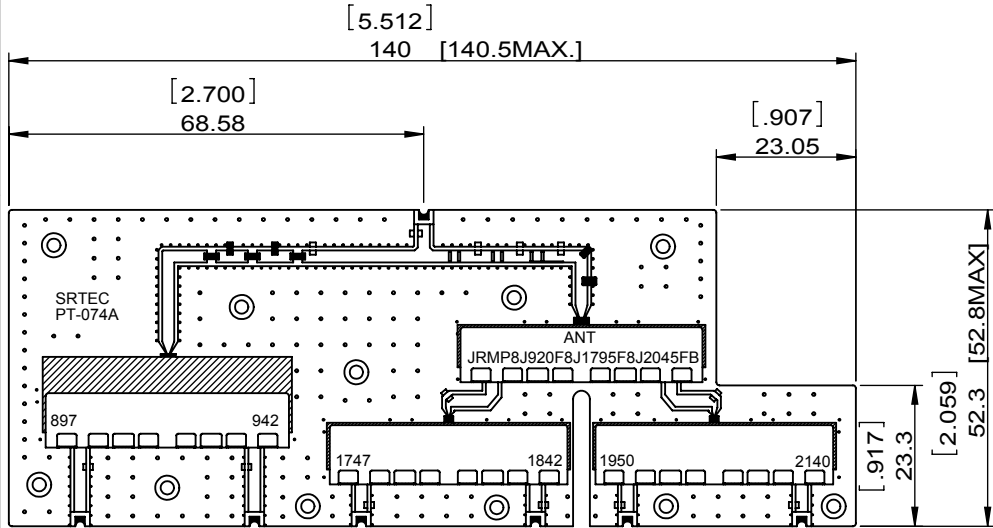
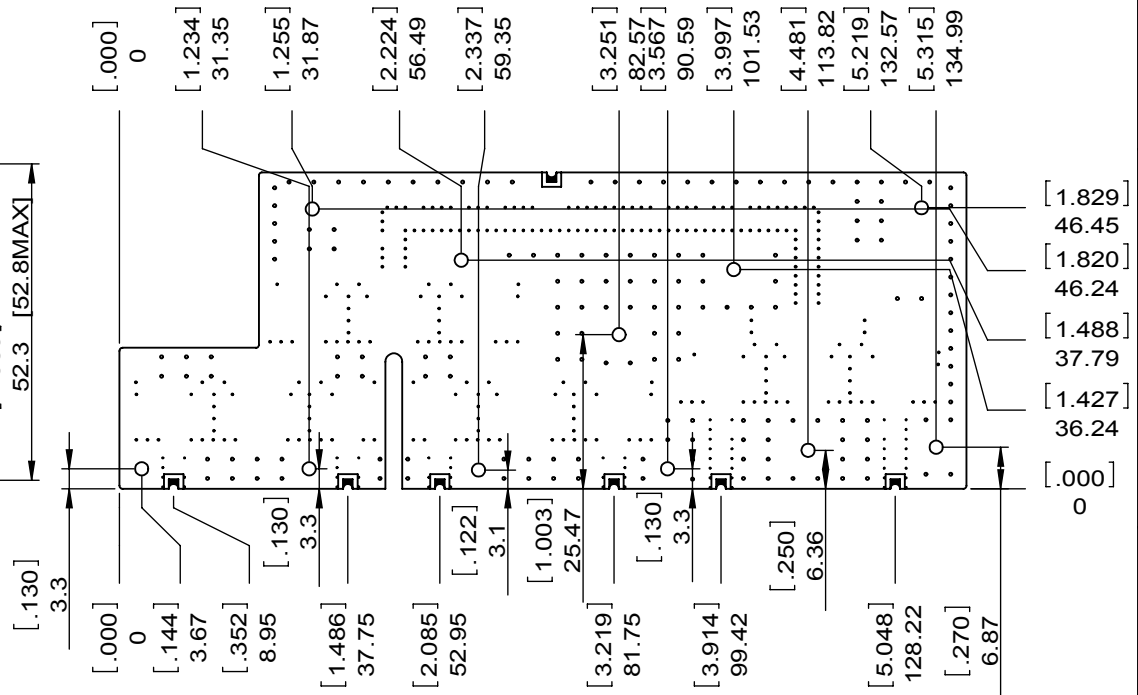


1		2		3		4		5		6			
Document No.	QR4-700-T-003	REV.	A/0	REV.	0	DESCRIPTION		REVISOR	ZC.Wu	DATE	11.30.2015	APPROVED	David

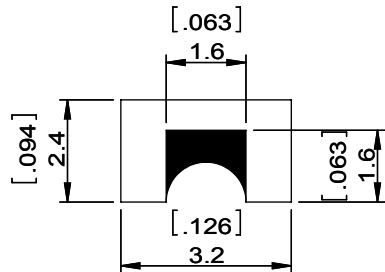
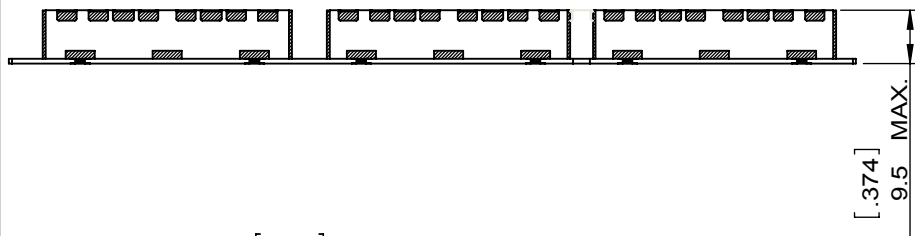
TOP VIEW



BOTTOM VIEW




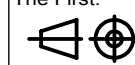
FRONT VIEW



This document is the property of JQL Electronic Inc. It cannot be copied, duplicated, used for manufacturing purposes or communicated to third party as a whole or partly, without the written consent of JQL Electronic Inc.

 : GROUND
 : I/O PORT
 TOLERANCE: ±0.20
 UNIT:mm

JQL JQL Electronic Inc				
MATERIAL:		DWG NO:		
-		JRMP8J920F8J1795F8J2045FB		
SURFACE TREATMENT:		DWG BY:		SACLE
-		ZC.Wu		11.30.2015
DESCRIPTION:		CHK'D BY:		
FILTER		APP'VD BY:		
Unit:		Tolerance:		The First:
mm[inch]		Liner: ±0.25		
		Anguar: ±0.5°		A4

1		2		3		4		5		6			
Document No.		QR4-700-T-003		REV.		DESCRIPTION		REVISOR		DATE			
REV.		A/0		0				ZC.Wu		11.30.2015			
APPROVED										David			
SPECIFICATIONS													
Part's Number		JRMP8J920F8J1795F8J2045FB											
ITEMS		Commomn1											
Port		CH1		CH2		CH3		CH4		CH5			
Center Frequency(MHz)		897.5		1747.5		1950.0		942.5		1842.5			
Bandwidth(MHz)		880.0~915.0		1710.0~1785.0		1920.0~1980.0		925.0~960.0		1805.0~1880.0			
Insertion Loss(dB)MAX.		4.0		4.0		3.5		4.0		3.5			
Ripple(dB)MAX.		1.8		1.5		1.0		1.8		1.5			
Return Loss(dB)MIN.		17.0		17.0		17.0		17.0		15.0			
Attenuation(Absolute Value dB)		40@925.0~960.0MHz 50@1710.0~1785.0MHz 50@1805.0~1880.0MHz 50@1920.0~1980.0MHz 50@2110.0~2170.0MHz		70@880.0~960.0MHz 70@925.0~960.0MHz 40@1805.0~1880.0MHz 75@1920.0~1980.0MHz 70@2110.0~2170.0MHz		80@880.0~960.0MHz 80@925.0~960.0MHz 80@1710.0~1785.0MHz 50@1805.0~1880.0MHz 55@2110.0~2170.0MHz		40@880.0~915.0MHz 50@1710.0~1785.0MHz 50@1805.0~1880.0MHz 50@1920.0~1980.0MHz 50@2110.0~2170.0MHz		70@880.0~915.0MHz 70@925.0~960.0MHz 40@1710.0~1785.0MHz 50@1920.0~1980.0MHz 60@2110.0~2170.0MHz		80@880.0~915.0MHz 80@925.0~960.0MHz 80@1710.0~1785.0MHz 70@1805.0~1880.0MHz 55@1920.0~1980.0MHz	
Attenuation(Relative Value)		-		-		-		-		-			
Input Power(Watte)		3.0											
In/Out Impedance(Ω)		50											
Operation Temperature (°C)		-40~+85											
Additional Notes		-											
JQL JQL Electronic Inc													
MATERIAL:						DWG NO:							
-						JRMP8J920F8J1795F8J2045FB							
SURFACE TREATMENT:						DWG BY:		ZC.Wu		11.30.2015			
-						CHK'D BY:				SCALE			
DESCRIPTION:						APPV'D BY:				1:1			
FILTER						Unit:		Tolerance:		The First:			
						mm[inch]		Liner: ±0.25					
								Anguar: ±0.5°		A4			
1		2		3		WEIGHT:		5		SHEET 2 OF 2			



This document is the property of JQL Electronic Inc. It cannot be copied, duplicated, used for manufacturing purposes or communicated to third party as a whole or partly, without the written consent of JQL Electronic Inc.