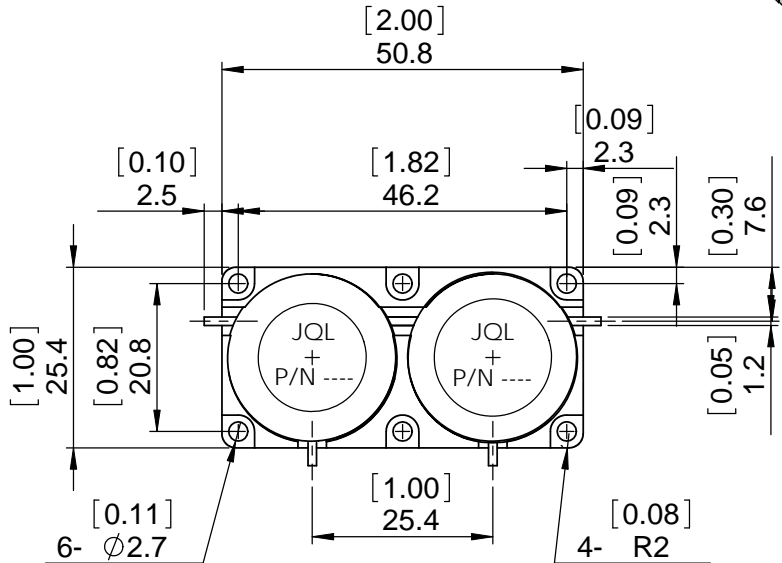
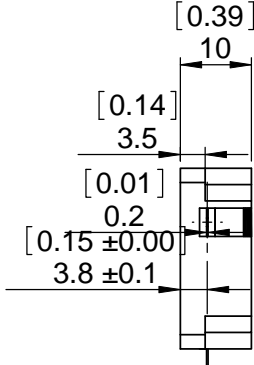
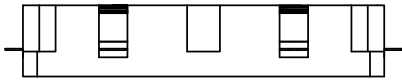
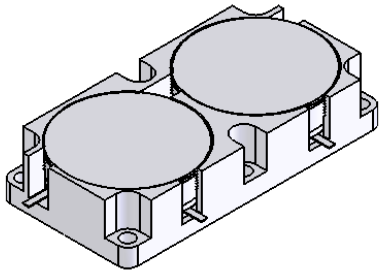


5		6		
REV.	DESCRIPTION	REVISOR	DATE	APPROVE

**SPECIFICATIONS**

P/N: JC2D2025T2035M10  
 FREQ: 2.025~2.035GHz

ISOLATION: 20dB MIN/Per Junction  
 INSERTION LOSS: 0.3dB MAX/Per Junction  
 VSWR: 1.22:1 MAX  
 PWR: 100 W AVG  
 CIRCULATION: CLOCKWISE  
 TEMPERATURE OPERATING: -40C~+85C  
 STORAGE: -55C~+125C



This document is the property of JQL Electronic Inc. It cannot be copied, duplicated, used for manufacturing purposes or communicated to third party as a whole or partly, without the written consent of JQL Electronic Inc.

<b>JQL JQL Electronic Inc</b>		500 Lake Cook Road, Suite 350 Deerfield, IL 60015, USA		Tel : 1(888)236-9828 Fax: 1(630)823-2902	
MATERIAL: <b>STEEL</b>		DWG NO. <b>JC2D2025T2035M10</b>			
SURFACE TREATMENT: <b>NICKLE PLATING</b>					
DESCRIPTION: <b>DROP-IN CIRCULATOR</b>		NAME		DATE	
		SIGNATURE		REV:	
		DWG BY: <b>SY</b>		12.30.08	
		CHK'D BY: <b>GC</b>		12.30.08	
		APPV'D BY: <b>JZ</b>		12.30.08	
		TOLERANCE		Q.A	
		Liner: ±0.1mm		A4	
		Angular: ±0.5°			