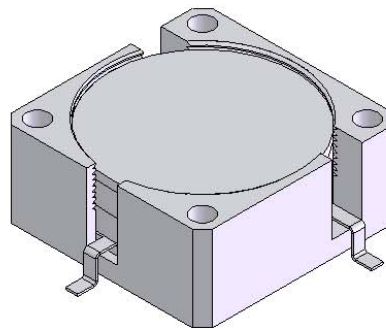
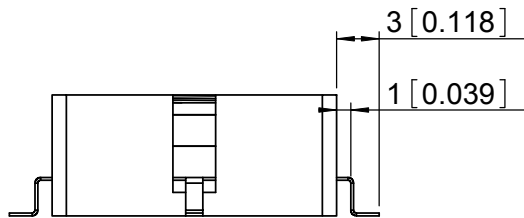


1	2
Document No.	QR4-700-T-003
REV.	A/0

5	6			
REV.	DESCRIPTION	REVISOR	DATE	APPROVE
0		ZLJ	11.08.12	CH



SPECIFICATION

Part's Number: JCD0875T0890YM12L
 Frequency: 0.875~0.890GHz

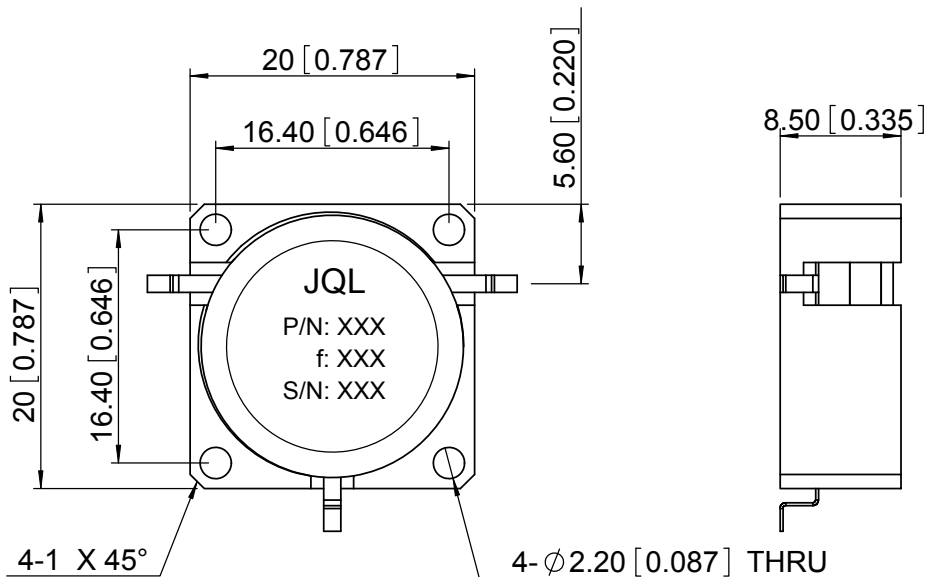
Direction: CW
 Insertion Loss: 0.25dB MAX.@25□
 0.30dB MAX.@-40□~+85□

Isolation: 22dB MIN.@25□
 20dB MIN.@-40□~+85□

Return Loss: 22dB MIN.@25□
 22dB MIN.@-40□~+85□

PWR FWD/REV : 120/120W
 Temperature: -40 °C~+85 °C

BODY: STEEL,NICKEL PLATED
 TAB: BRASS,SILVER PLATED
 1.2W X3.0LG.X 0.2THK.



NOTES:

- 1.STANDARD INPUT/OUTPUT 50OHM IMPEDANCE
- 2.BEO FREE,LEAD FREE,NO Nd MATERIAL
- 3.RoHS COMPLIANT
- 4.S-PARAMETERS TO BE MEASURED BY CONECTING PORT 1 AND PORT 2 TO VNA, PORT 3 TO LOAD
- 5.LOAD RETURN LOSS IS 30dB OR HIGHER WHEN TUNING



This document is the property of JQL Electronic Inc. It cannot be copied, duplicated, used for manufacturing purposes or communicated to third party as a whole or partly, without the written consent of JQL Electronic Inc.

JQL JQL Electronic Inc		500 Lake Cook Road, Suite 350 Deerfield, IL 60015, USA		Tel : 1(888)236-9828 Fax: 1(630)823-2902	
PACKAGE CODE: C2020-001		DWG NO. JCD0875T0890YM12L			
SURFACE TREATMENT: NICKEL PLATING		NAME ZLJ		DATE 11.08.12	
DESCRIPTION: DROP-IN CIRCULATOR		DWG BY:		SCALE:	
		CHK'D BY:			
		APPVD BY:			
Unit: mm/inch		TOLERANCE: Liner: ±0.1mm Angular: ±0.5°		Type Of Projection 	