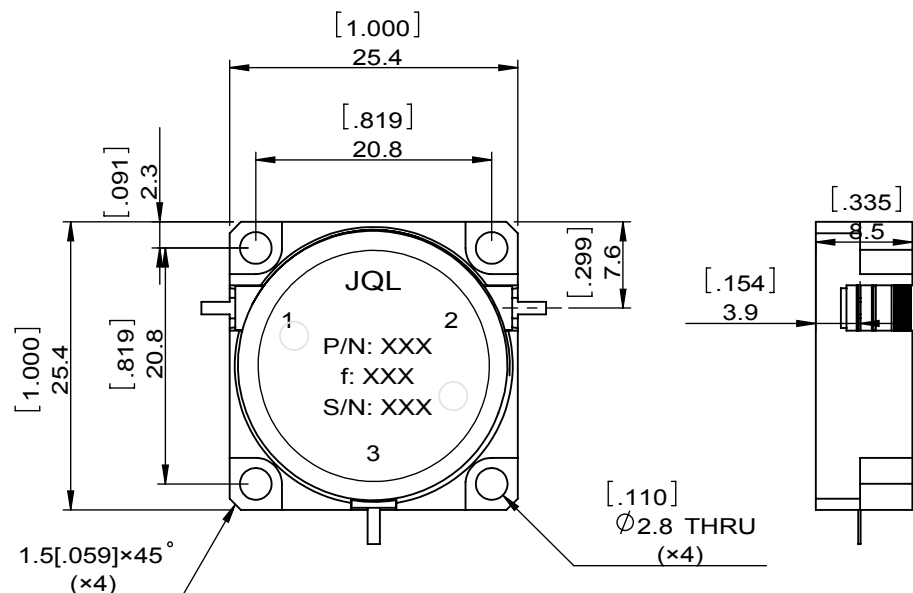
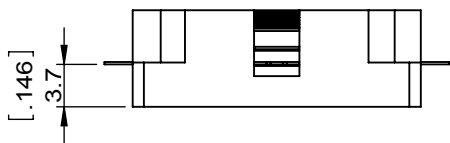
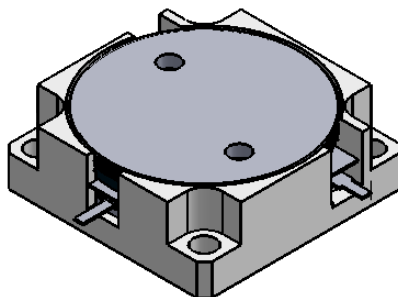


1		2		3		4		5		6			
Document No.	QR4-700-T-003	REV.	A/0	REV.	0	DESCRIPTION		REVISOR	LJ.Zhang	DATE	06.23.2015	APPROVED	David



SPECIFICATIONS	
Part's Number	JCD0880T0960M10
Frequency(GHz)	0.880~0.960
Direction	CW
Insertion Loss(dB)MAX	0.35@880~960MHz 0.15@880~915MHz
Isolation(dB)MIN	20@880~915MHz 25@925~960MHz 20@925~960MHz(130°C)
Return Loss(dB)MIN	20.0
3rd IMD(dBc)MAX	-80@2X46dBm tones
Power FWD/REV/PK(Watt)	Forward Power(RMS):20dBm(Carriers in 925-960MHz) Forward Power(Peak instantaneous):30dBm(Carriers in 925-960MHz) Reverse Power(RMS):46dBm(Carriers in 925-960MHz) Reverse Power(Peak instantaneous):55dBm(Carriers in 925-960MHz)
Operating Temperature(°C)	-40~+65
Storage Temperature(°C)	-
2nd/3rd Harmonic(dBc)	-
Termination/Attenuator(Watt/dB)	-
Tab(W×LG×THK)(mm[Inch])	1.0[0.039]×2.5[0.10]×0.2[0.008]
Additional Notes	-

- NOTES:
 1.STANDARD INPUT/OUTPUT 50OHM IMPEDANCE
 2.BEO FREE,LEAD FREE,NO Nd MATERIAL
 3.RoHS COMPLIANT
 4.S-PARAMETERS TO BE MEASURED BY CONECTING PORT 1 AND PORT 2 TO VNA, PORT 3 TO LOAD
 5.LOAD RETURN LOSS IS 30dB OR HIGHER WHEN TUNING



This document is the property of JQL Electronic Inc. It cannot be copied, duplicated, used for manufacturing purposes or communicated to third party as a whole or partly, without the written consent of JQL Electronic Inc.

JQL JQL Electronic Inc				
MATERIAL: STEEL		DWG NO: JCD0880T0960M10		
SURFACE TREATMENT: NICKEL PLATING		DWG BY:	LJ.Zhang	06.23.2015
DESCRIPTION: DROP-IN CIRCULATOR		CHK'D BY:		SCALE
		APPV'D BY:		3:2
Unit: mm[inch]		Tolerance: Liner: ±0.25 Anguar: ±0.5°	The First: 	
				A4