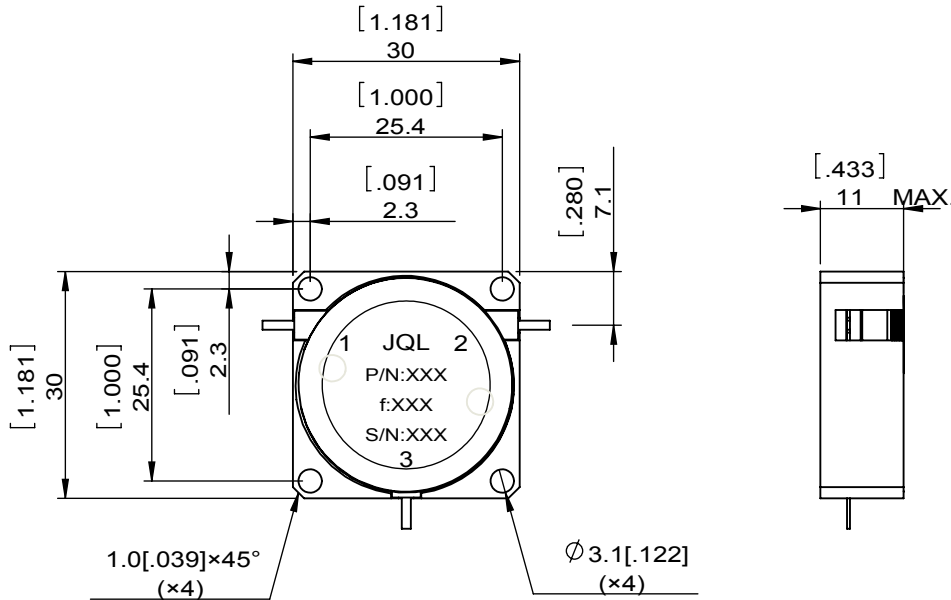
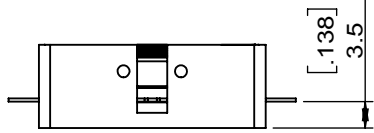
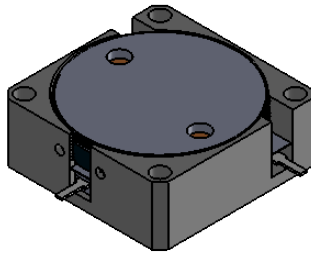


1		2		3		4		5		6	
Document No.	QR4-700-T-003	REV.	A/0	REV.	DESCRIPTION	REVISOR	DATE	APPROVED			
				0		Hu.Jiang	07.16.2020	HC.Qiu			



- NOTES:
 1.STANDARD INPUT/OUTPUT 50OHM IMPEDANCE
 2.BEO FREE,LEAD FREE,NO Nd MATERIAL
 3.RoHS COMPLIANT
 4.S-PARAMETERS TO BE MEASURED BY CONECTING PORT 1 AND PORT 2 TO VNA, PORT 3 TO LOAD
 5.LOAD RETURN LOSS IS 30dB OR HIGHER WHEN TUNING



This document is the property of JQL Technologies Corporation. It cannot be copied, duplicated, used for manufacturing purposes or communicated to third party as a whole or partly, without the written consent of JQL Technologies Corporation.

SPECIFICATIONS	
Part's Number	JCD0930T1130RM6K
Frequency(GHz)	0.930~1.130
Direction	CW
Insertion Loss(dB)MAX	0.3 0.25@TYP
Isolation(dB)MIN	20.0 23.0@TYP
Return Loss(dB)MIN	20.0
3rd IMD(dBc)MAX	-
Power FWD/REV/PK(Watt)	-/-6KW 20µs
Operating Temperature(°C)	-10~+95
Storage Temperature(°C)	-
2nd/3rd Harmonic(dBc)	-
Termination/Attenuator(Watt/dB)	-
Tab(W×LG×THK)(mm[Inch])	1.2[0.047]×4[0.157]±0.5[0.020]×0.4[0.016]
Additional Notes	1.T RING NEEDED 2.RTV fills the all port 3.C-X

JQL JQL Technologies Corporation				
MATERIAL: STEEL		DWG NO: JCD0930T1130RM6K		
SURFACE TREATMENT: NICKEL PLATING		DWG BY:	Hu.Jiang	07.16.2020
DESCRIPTION: DROP-IN CIRCULATOR		CHK'D BY:		SACLE
		APPV'D BY:		1:1
Unit: mm[inch]		Tolerance: Liner: ±0.25 Anguar: ±0.5°	The First:	A4