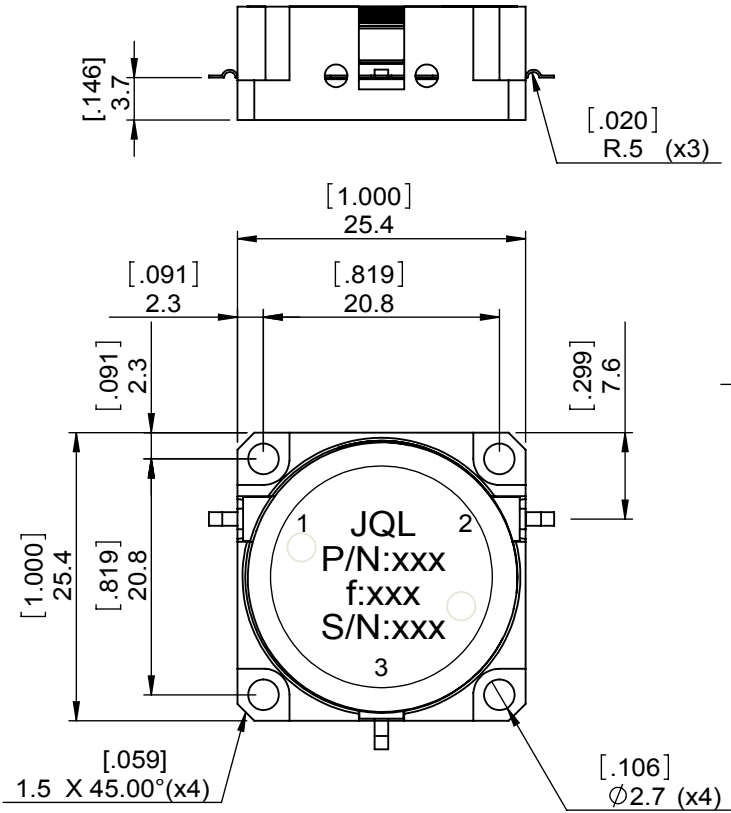
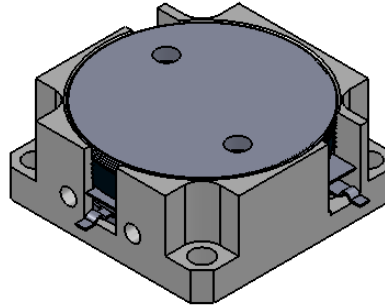


1	2
Document No.	QR4-700-T-003
REV.	A/0

3	4	5	6
REV.	DESCRIPTION	REVISOR	DATE
0		JP.Yang	07.30.2013
			APPROVED
			David



SPECIFICATIONS	
Part's Number	JCD0950T1300M25
Frequency(GHz)	0.950~1.300
Direction	CW
Insertion Loss(dB)MAX	0.50
Isolation(dB)MIN	17.0
Return Loss(dB)MIN	16.5
3rd IMD(dBc)MAX	
Power FWD/REV/PK(Watt)	50/50/500
Operating Temperature(°C)	-40~+85
Storage Temperature(°C)	-55~+125
2nd/3rd Harmonic(dBc)	
Termination/Attenuator(Watt/dB)	
Tab(W×LG×THK)(mm[Inch])	1.2[.047]x2.5[.100]x0.2[0.008]
Additional Notes	Note: 1.INSERTION PHASE MATCH +/-3 DEGREE AMONG PORTS 1-2,2-3,3-1 2.PHASE MATCH +/-5 DEGREE AMONG PARTS 2.TABS ARE RTV SEALED AT 3 PORTS 3.OMEGA AT TABS 4.SILVER PLATING REMOVAL OF TAB EDGES 5.BARE TAB EDGES WITH TIN LEAD SOLDER DIPPED

- NOTES:
 1.STANDARD INPUT/OUTPUT 50OHM IMPEDANCE
 2.BEO FREE,LEAD FREE,NO Nd MATERIAL
 3.RoHS COMPLIANT
 4.S-PARAMETERS TO BE MEASURED BY CONECTING PORT 1 AND PORT 2 TO VNA, PORT 3 TO LOAD
 5.LOAD RETURN LOSS IS 30dB OR HIGHER WHEN TUNING



This document is the property of JQL Electronic Inc. It cannot be copied, duplicated, used for manufacturing purposes or communicated to third party as a whole or partly, without the written consent of JQL Electronic Inc.

JQL JQL Electronic Inc		500 Lake Cook Road, Suite 350 Deerfield, IL 60015, USA		Tel: 1(888)236-9828 Fax: 1(888)823-2902	
MATERIAL: STEEL	DWG NO: JCD0950T1300M25				
SURFACE TREATMENT: NICKEL PLATING	DWG BY:	JP.Yang	07.30.2013	SACLE	
DESCRIPTION: DROP-IN CIRCULATOR	CHK'D BY:				3:2
	APPV'D BY:				
Unit: mm[inch]	Tolerance: Liner: ±0.25 Anguar: ±0.5°	The First:			
			A4		