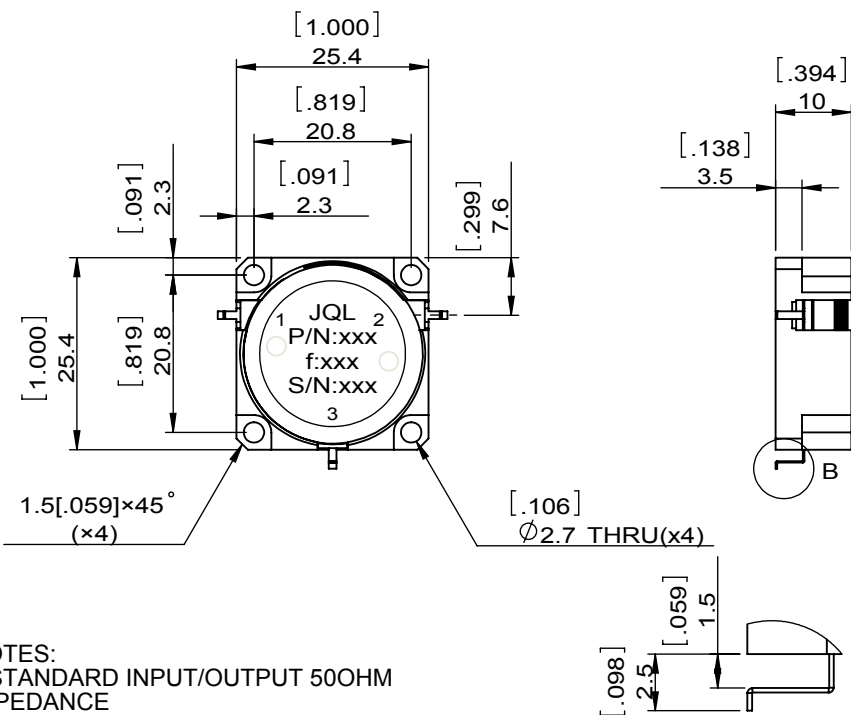
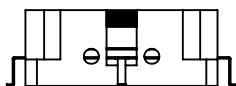
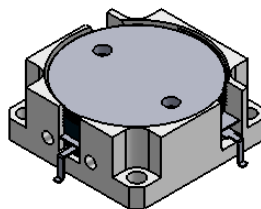


1		2		3		4		5		6		
Document No.	QR4-700-T-003							REV.	DESCRIPTION	REVISOR	DATE	APPROVED
REV.	A/0							0		ZC.Wu	11.17.2014	David



- NOTES:
 1. STANDARD INPUT/OUTPUT 50OHM IMPEDANCE
 2. BEO FREE, LEAD FREE, NO Nd MATERIAL
 3. RoHS COMPLIANT
 4. S-PARAMETERS TO BE MEASURED BY CONECTING PORT 1 AND PORT 2 TO VNA, PORT 3 TO LOAD
 5. LOAD RETURN LOSS IS 30dB OR HIGHER WHEN TUNING

DETAIL B
SCALE 3 : 1



This document is the property of JQL Electronic Inc. It cannot be copied, duplicated, used for manufacturing purposes or communicated to third party as a whole or partly, without the written consent of JQL Electronic Inc.

SPECIFICATIONS	
Part's Number	JCD0960T1215M2L
Frequency(GHz)	0.960~1.215
Direction	CW
Insertion Loss(dB)MAX	0.4
Isolation(dB)MIN	20
Return Loss(dB)MIN	19
3rd IMD(dBc)MAX	-
Power FWD/REV/PK(Watt)	4/-/200
Operating Temperature(°C)	-50~+85
Storage Temperature(°C)	-
2nd/3rd Harmonic(dBc)	-
Termination/Attenuator(Watt/dB)	-
Tab(W×LG×THK)(mm[Inch])	1.0[0.039]×2.5[0.098]×0.2[0.008]
Additional Notes	-

JQL JQL Electronic Inc				
MATERIAL: STEEL		DWG NO: JCD0960T1215M2L		
SURFACE TREATMENT: NICKEL PLATING		DWG BY:	ZC.Wu	11.17.2014
DESCRIPTION: DROP-IN CIRCULATOR		CHK'D BY:		SCALE
		APPV'D BY:		1:1
		Unit: mm[inch]	Tolerance: Liner: ±0.25 Anguar: ±0.5°	The First:
				A4

WEIGHT:

5