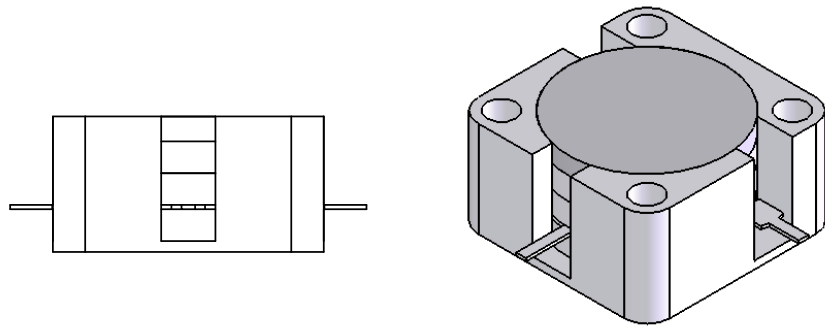


1 2 3 4 5 6

Stock Number

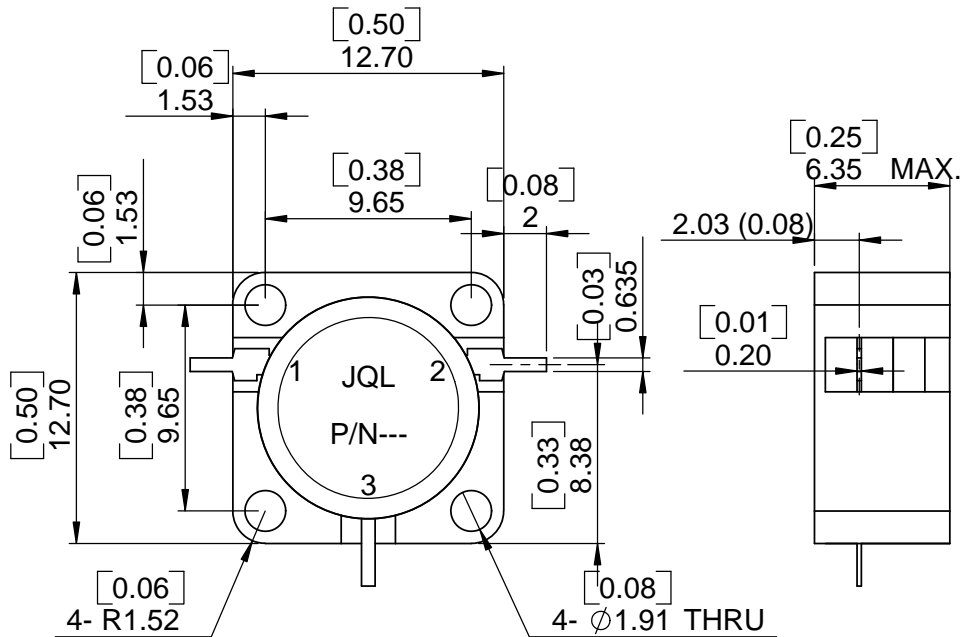
REV.	DESCRIPTION	REVISOR	DATE	APPROVE
0		MH	03.26.11	CH



SPECIFICATION

Part's Number: JCD10K7T12K8VM1
 Frequency: 10.7~12.8GHz

Direction: CW
 Insertion Loss: 0.4dB MAX.
 Isolation: 20dB MIN.
 RL: 19dB MIN.
 Power Avg: 15W
 Temperature: -40°C~+85°C



This document is the property of JQL Electronic Inc. It cannot be copied, duplicated, used for manufacturing purposes or communicated to third party as a whole or partly, without the written consent of JQL Electronic Inc.

JQL JQL Electronic Inc		500 Lake Cook Road, Suite 350 Deerfield, IL 60015, USA		Tel : 1(888)236-9828 Fax: 1(630)823-2902	
MATERIAL: STEEL		DWG NO. JCD10K7T12K8VM1			
SURFACE TREATMENT: NICKLE PLATING		NAME MH		DATE 03.26.11	
DESCRIPTION: DROP-IN CIRCULATOR		CHK'D BY: FW		03.26.11	
		APPVD BY: CH		03.26.11	
Unit: mm		TOLERANCE: Liner: ±0.1mm Angular: ±0.5°		Type Of Projection 	

1 2 WEIGHT: SHEET 1 OF 1