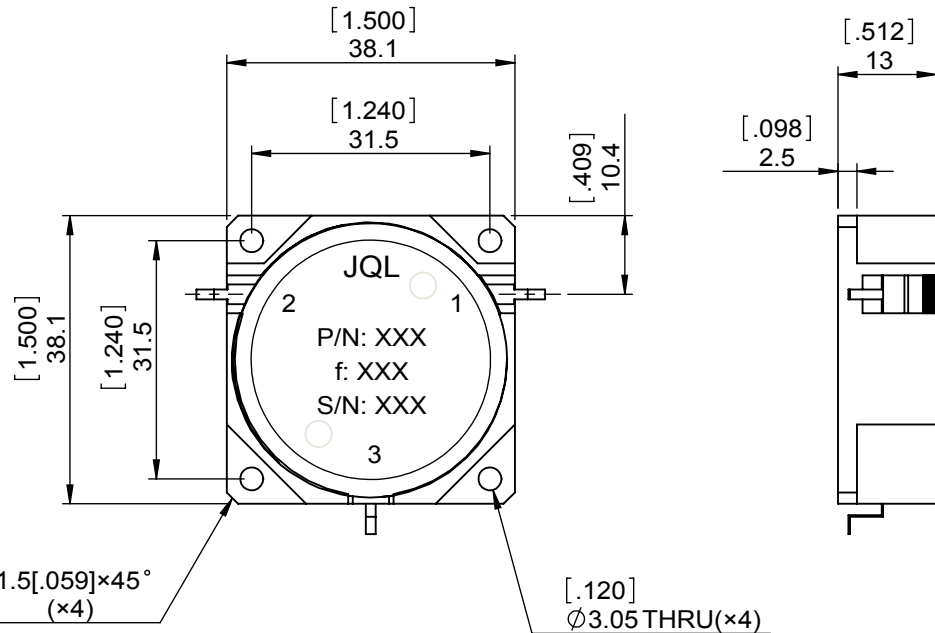
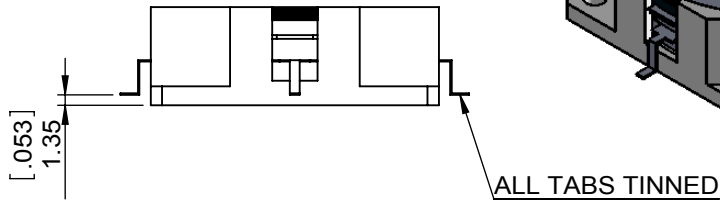
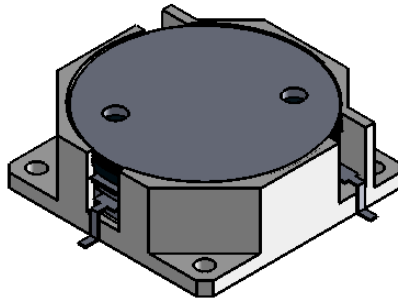


1		2		3		4		5		6	
Document No.	QR4-700-T-003	REV.	A/0	REV.	DESCRIPTION	REVISOR	DATE	APPROVED			
				0		M.Hao	12.16.2013	David			



SPECIFICATIONS	
Part's Number	JCD1350T2400KM1C
Frequency(GHz)	1.350~2.400
Direction	CCW
Insertion Loss(dB)MAX	0.70@-40°C~-20°C 0.60@-20°C~+85°C 14.0@-40°C~-20°C
Isolation(dB)MIN	16.0@-20°C~0°C 18.0@0°C~+60°C 15.0@+60°C~+85°C
Return Loss(dB)MIN	14.0@-40°C~-20°C 15.6@-20°C~0°C 17.7@0°C~+60°C 15.6@+60°C~+85°C
3rd IMD(dBc)MAX	-
Power FWD/REV/PK(Watt)	15/15/150
Operating Temperature(°C)	-40~+85
Storage Temperature(°C)	-
2nd/3rd Harmonic(dBc)	
Termination/Attenuator(Watt/dB)	
Tab(W×LG×THK)(mm[Inch])	1.3[.05]×4.0[.157]×0.25[.010]
Additional Notes	ALL TABS TINNED

JQL JQL Electronic Inc 500 Lake Cook Road, Suite 350 Deerfield, IL 60015, USA Tel: 1(888)236-9828 Fax: 1(888)823-2902

MATERIAL: STEEL	DWG NO: JCD1350T2400KM1C			
SURFACE TREATMENT: NICKEL PLATING	DWG BY:	M.Hao	12.16.2013	SACLE
	CHK'D BY:			
DESCRIPTION: DROP-IN CIRCULATOR	APPV'D BY:			1:1
	Unit: mm[inch]	Tolerance: Liner: ±0.25 Anguar: ±0.5°	The First:	A4



This document is the property of JQL Electronic Inc. It cannot be copied, duplicated, used for manufacturing purposes or communicated to third party as a whole or partly, without the written consent of JQL Electronic Inc.

WEIGHT:

SHEET 1 OF 1