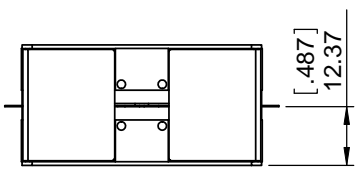
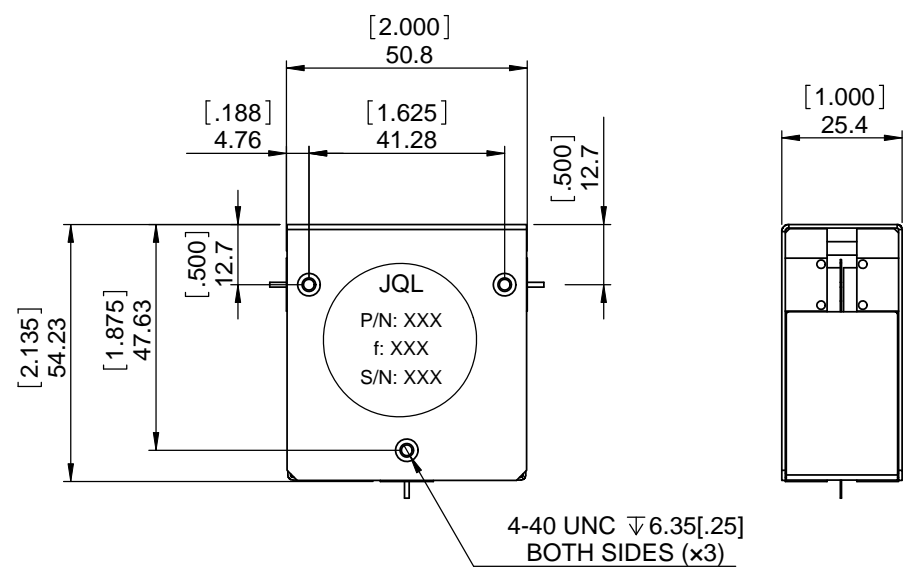


1	2	3	4	5	6			
Document No.	QR4-700-T-003			REV.	DESCRIPTION	REVISOR	DATE	APPROVED
REV.	A/0			0		LJ.Zhang	06.19.2013	David



SPECIFICATIONS	
Part's Number	JCD1350T2700E49
Frequency(GHz)	1.350~2.700
Direction	CW
Insertion Loss(dB)MAX	0.60
Isolation(dB)MIN	17.0
Return Loss(dB)MIN	17.0
3rd IMD(dBc)MAX	-
Power FWD/REV/PK(Watt)	20/20/-
Operating Temperature(°C)	-40~85
Storage Temperature(°C)	-
2nd/3rd Harmonic(dBc)	-
Termination/Attenuator(Watt/dB)	-
Tab(WxLGxTHK)(mm[Inch])	1[.039]x3.5[.138]x0.254[.001]
Additional Notes	-



JQL JQL Electronic Inc		500 Lake Cook Road, Suite 350 Deerfield, IL 60015, USA		Tel: 1(888)236-9828 Fax: 1(888)823-2902	
MATERIAL: STEEL		DWG NO: JCD1350T2700E49			
SURFACE TREATMENT: NICKEL PLATING		DWG BY:	LJ.Zhang	06.19.2013	SACLE
DESCRIPTION: DROP-IN ISOLATOR		CHK'D BY:			2:3
		APPV'D BY:			
		Unit:	mm[inch]	Tolerance:	The First:
				Liner: ±0.25	A4
				Anguar: ±0.5°	



This document is the property of JQL Electronic Inc. It cannot be copied, duplicated, used for manufacturing purposes or communicated to third party as a whole or party, without the written consent of JQL Electronic Inc.