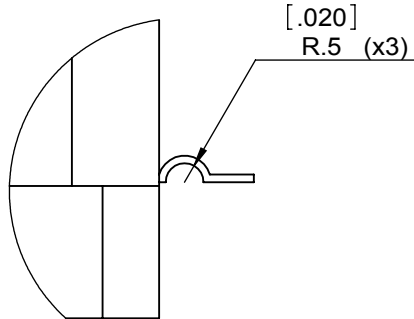
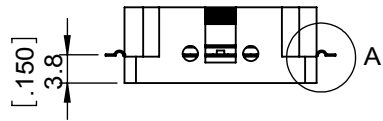
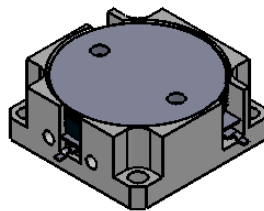
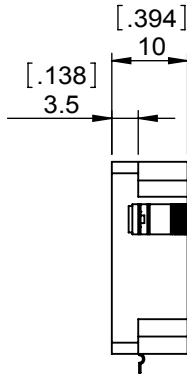
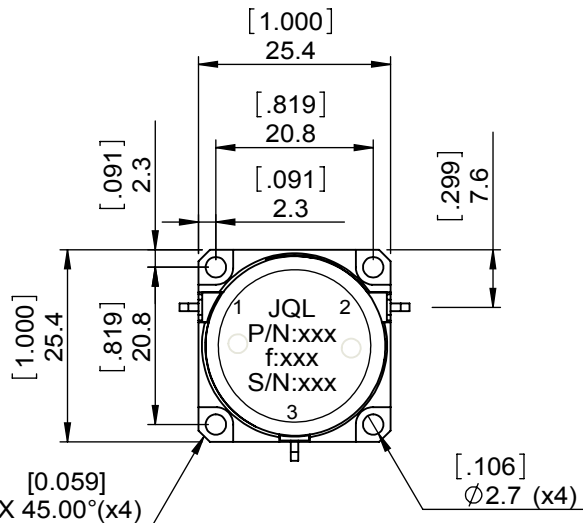


| | | | | | | | | | | | |
|--------------|---------------|------|-----|------|-------------|---------|------------|----------|--|---|--|
| 1 | | 2 | | 3 | | 4 | | 5 | | 6 | |
| Document No. | QR4-700-T-003 | REV. | A/0 | REV. | DESCRIPTION | REVISOR | DATE | APPROVED | | | |
| | | | | 0 | | M.Hao | 11.08.2013 | David | | | |



DETAIL A
SCALE 5 : 1



- Note:
- 1.INSERTION PHASE MATCH +/-3 DEGREE AMONG PORTS 1-2,2-3,3-1
 - 2.PHASE MATCH +/-5 DEGREE AMONG PARTS
 - 3.TABS ARE RTV SEALED AT 3 PORTS
 - 4.OMEGA AT TABS
 - 5.SILVER PLATING REMOVAL OF TAB EDGES
 - 6.BARE TAB EDGES WITH TIN LEAD SOLDER DIPPE
 - 7.Tin Plating should be made in a Tin Lead Bath resulting smooth surface bubble shape tin covering the flat tab edge around.

- NOTES:
- 1.STANDARD INPUT/OUTPUT 50OHM IMPEDANCE
 - 2.BEO FREE,LEAD FREE,NO Nd MATERIAL
 - 3.ROHS COMPLIANT
 - 4.S-PARAMETERS TO BE MEASURED BY CONECTING PORT 1 AND PORT 2 TO VNA,PORT 3 TO LOAD
 - 5.LOAD RETURN LOSS IS 30dB OR HIGHER WHEN TUNING



This document is the property of JQL Electronic Inc. It cannot be copied, duplicated, used for manufacturing purposes or communicated to third party as a whole or party, without the written consent of JQL Electronic Inc.

| SPECIFICATIONS | |
|---------------------------------|---|
| Part's Number | JCD1575T1775M25 |
| Frequency(GHz) | 1.575~1.775 |
| Direction | CW |
| Insertion Loss(dB)MAX | 0.50 |
| Isolation(dB)MIN | 17.0 |
| Return Loss(dB)MIN | 16.5 |
| 3rd IMD(dBc)MAX | - |
| Power FWD/REV/PK(Watt) | 250/250/- |
| Operating Temperature(°C) | -40~+85 |
| Storage Temperature(°C) | -55~-125 |
| 2nd/3rd Harmonic(dBc) | - |
| Termination/Attenuator(Watt/dB) | |
| Tab(W×LG×THK)(mm[Inch]) | TAB: BRASS, 2 um SILVER PLATING OVER 3 um COPPER PLATING 1.2[.047]x2.5[.098]x0.2[0.008]- |
| Additional Notes | - |

| | | | | | |
|---|-----------------------------------|---|------------|--|----|
| JQL JQL Electronic Inc | | 500 Lake Cook Road, Suite 350 Deerfield, IL 60015, USA | | Tel: 1(888)236-9828 Fax: 1(888)823-2902 | |
| MATERIAL: STEEL | DWG NO: JCD1575T1775M25 | | | | |
| SURFACE TREATMENT: NICKEL PLATING | DWG BY: | M.Hao | 11.08.2013 | SACLE | |
| | CHK'D BY: | | | | |
| DESCRIPTION: DROP-IN CIRCULATOR | APPV'D BY: | | | 1:1 | |
| | Unit: mm[inch] | Tolerance: Liner: ±0.25 Anguar: ±0.5° | The First: | | A4 |
| | | | | | |