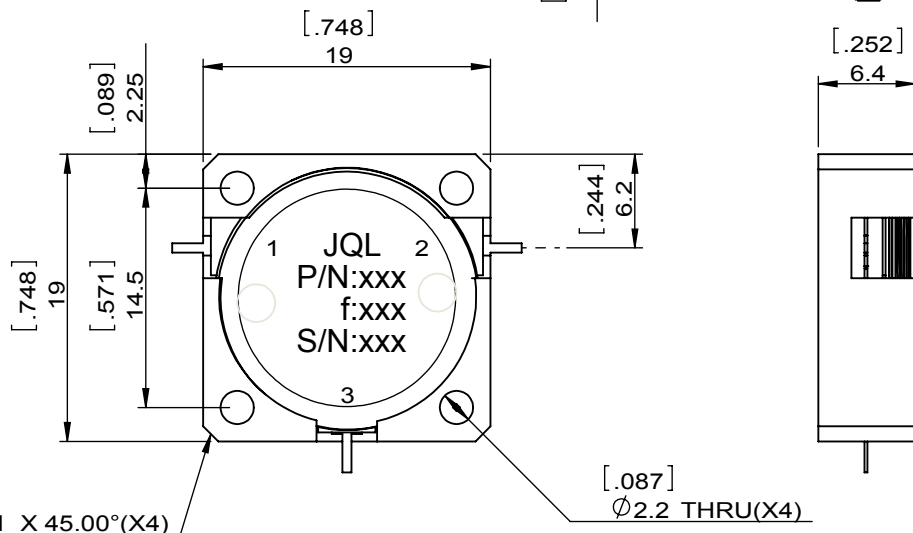
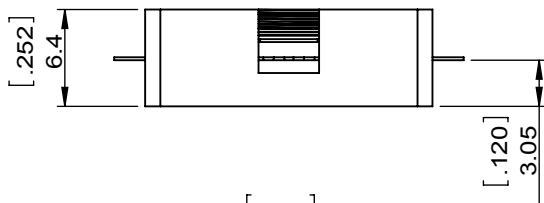
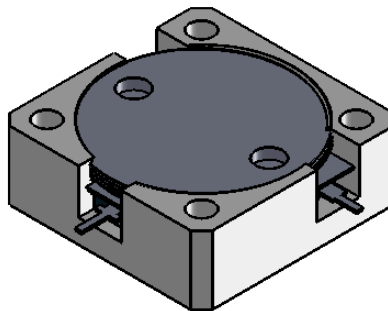


1		2		3		4		5		6	
Document No.	QR4-700-T-003	REV.	A/0	REV.	DESCRIPTION	REVISOR	DATE	APPROVED			
		0		ZC.Wu	01.07.2015	David					



SPECIFICATIONS	
Part's Number	JCD1980T2510SM10
Frequency(GHz)	1.980~2.510
Direction	CW
Insertion Loss(dB)MAX	0.35
Isolation(dB)MIN	16.0
Return Loss(dB)MIN	14.0
3rd IMD(dBc)MAX	-
Power FWD/REV/PK(Watt)	100/100/-
Operating Temperature(°C)	-40~85
Storage Temperature(°C)	-
2nd/3rd Harmonic(dBc)	-
Termination/Attenuator(Watt/dB)	-
Tab(W×LG×THK)(mm[Inch])	0.6[0.024]X2.05[0.008]X0.2[0.008]
Additional Notes	-RTV Sealed

### 3.1. Climatic Conditions

No.	Environment	Qualification Test level	Qualification Test Time	MIL-STD 810G Method
1.	Operating Temperature	-40°C ~ +85°C		
2.	Storage Temperature	-55°C ~ +105°C		
3.	Humidity	Relative Humidity: 85% ~ 95%; Temperature: 30°C ~ 60°C	10 cycles, 24 Hours each	507.5
4.	Temperature & Altitude	50000 feet -42°C ~ 75°C	3 cycles, 20 min. each 75°C -42°C	520.3
5.	Acoustic Noise	150dB	0.5 Hour	515.5
6.	Salt-Fog	Salt concentration: 5%, Temperature: 35°C	96 Hours: 2 cycles of 48 hr., each with 24 hours of exposure and 24 hours drying time	509.5

### 3.2. Dynamic Conditions

No.	Environment	Qualification Test level	Qualification Test Time	MIL-STD 810G Method
1.	Random Vibration	10-2000Hz X,Y,Z 15 GRMS	45 min. Each axis	514.6
2.	Shock	Half Sine 25g, peak 11 mSec shock duration	3 per axis, per direction 180 Sec exposure, per axis	516.6
3.	Acceleration	±10g		513.6
4.	Pyro Shock	Mode 1 30 g @ 20 Hz Mode 2 250 g @ 600 Hz	3 per axis	516.6



This document is the property of JQL Electronic Inc. It cannot be copied, duplicated, used for manufacturing purposes or communicated to third party as a whole or partly, without the written consent of JQL Electronic Inc.

<b>JQL</b> JQL Electronic Inc		<b>DWG NO:</b> JCD1980T2510SM10	
<b>MATERIAL:</b> STEEL	<b>SCALE</b> 2:1		
<b>SURFACE TREATMENT:</b> NICKEL PLATING	DWG BY: ZC.Wu	01.07.2014	SCALE
<b>DESCRIPTION:</b> DROP-IN CIRCULATOR	CHK'D BY:		
	APPV'D BY:		
Unit: mm[inch]	Tolerance: Liner: ±0.25 Anguar: ±0.5°	The First:	A4