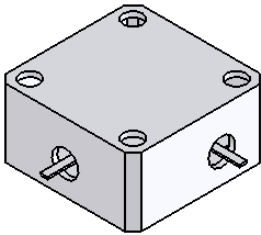
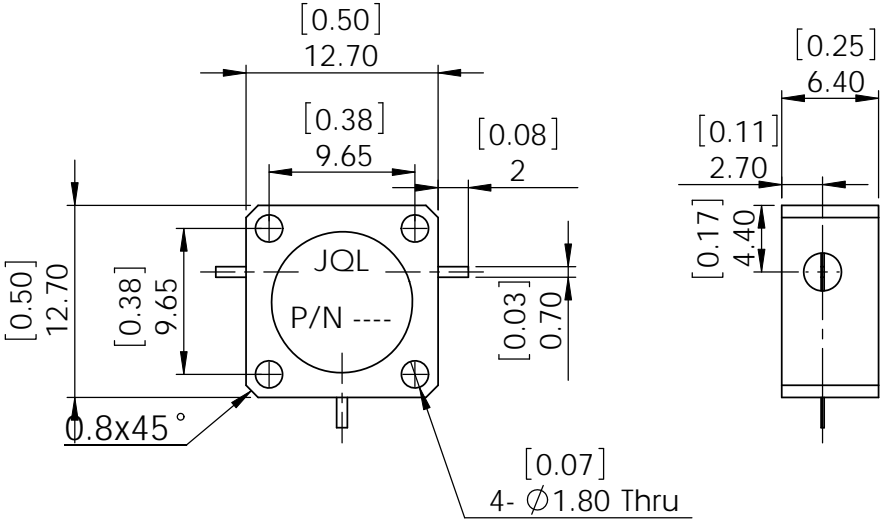


5		6		
REV.	DESCRIPTION	REVISOR	DATE	APPROVE

SPECIFICATIONS

P/N: JCD2010T2025Y1
 FREQ: 2.010~2.025GHz
 ISOLATION: 20dB TYP/20dB MIN
 INS LOSS: 0.25dBMAX
 RETURN LOSS: 20dB MIN
 CIRCULATION: CLOCKWISE
 PWR PK/AVG: 70W/10W
 TEMP: -20C~+85C



This document is the property of JQL Electronic Inc.
 It cannot be copied, duplicated, used for manufacturing purposes
 or communicated to third party as a whole or partly,
 without the written consent of JQL Electronic Inc.

JQL JQL Electronic Inc 500 Lake Cook Road, Suite 350 Tel : 1(888)236-9828
 Deerfield, IL 60015, USA Fax: 1(630)823-2902

MATERIAL: STEEL	DWG NO. JCD2010T2025Y1			
SURFACE TREATMENT: NICKEL PLATING	NAME	DATE	SIGNATURE	REV:
DESCRIPTION: DROP-IN CIRCULATOR	DWG BY: SY			0
	CHK'D BY: GC			
	APPV'D BY: JZ			
	TOLERANCE Liner: ±0.1mm Angular: ±0.5°		Q.A	A4