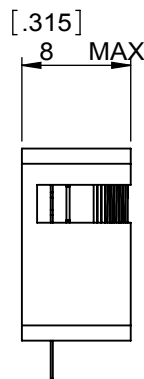
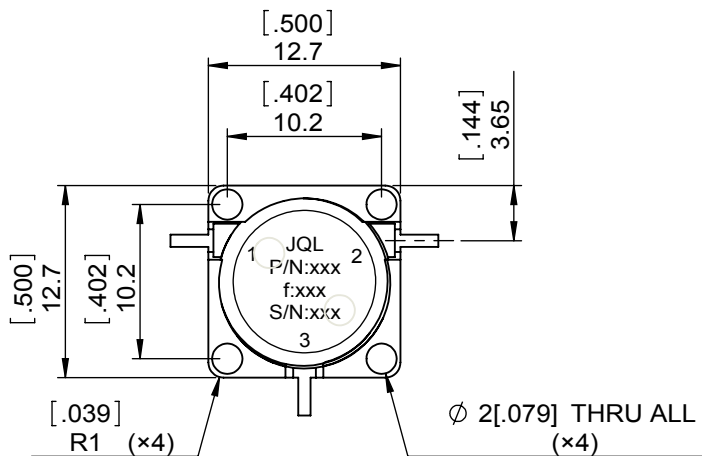
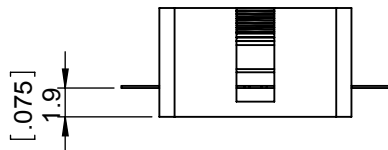
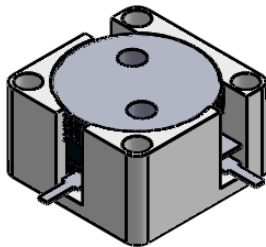


1		2		3		4		5		6			
Document No.	QR4-700-T-003	REV.	A/0	REV.	0	DESCRIPTION		REVISOR	LJ.Zhang	DATE	12.17.2013	APPROVED	David



SPECIFICATIONS	
Part's Number	JCD2400T2500VM10
Frequency(GHz)	2.400~2.500
Direction	CW
Insertion Loss(dB)MAX	0.25@Room temp 0.30
Isolation(dB)MIN	20.0
Return Loss(dB)MIN	20.0
3rd IMD(dBc)MAX	-
Power FWD/REV/PK(Watt)	100/100/-
Operating Temperature(°C)	-40~+85
Storage Temperature(°C)	-
2nd/3rd Harmonic(dBc)	-
Termination/Attenuator(Watt/dB)	-
Tab(W×LG×THK)(mm[Inch])	0.8[.031]x2.5[.100]x0.15[.010]
Additional Notes	-

NOTES:

- 1.STANDARD INPUT/OUTPUT 50OHM IMPEDANCE
- 2.BEO FREE,LEAD FREE,NO Nd MATERIAL
- 3.RoHS COMPLIANT
- 4.S-PARAMETERS TO BE MEASURED BYCONNECTING PORT 1 AND PORT 2 TO VNA,PORT 3 TO LOAD
- 5.LOAD RETURN LOSS IS 30dB OR HIGHER WHEN TUNING



This document is the property of JQL Electronic Inc. It cannot be copied, duplicated, used for manufacturing purposes or communicated to third party as a whole or partly, without the written consent of JQL Electronic Inc.

JQL	JQL Electronic Inc	500 Lake Cook Road, Suite 350	Tel: 1(888)236-9828
		Deerfield, IL 60015, USA	Fax: 1(888)823-2902

MATERIAL: STEEL	DWG NO: JCD2400T2500VM10			
	DWG BY:	LJ.Zhang	12.17.2013	SACLE
SURFACE TREATMENT: NICKEL PLATING	CHK'D BY:			2:1
	APPV'D BY:			
DESCRIPTION: DROP IN CIRCULATOR	Unit:	Tolerance:	The First:	A4
	mm[inch]	Liner: ±0.25		
		Anguar: ±0.5°		