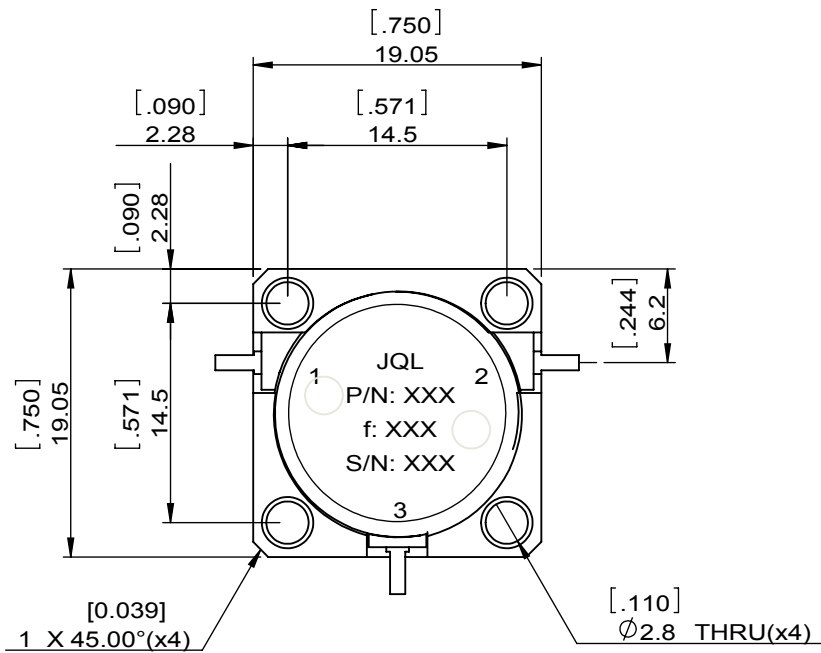
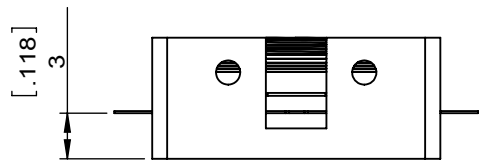
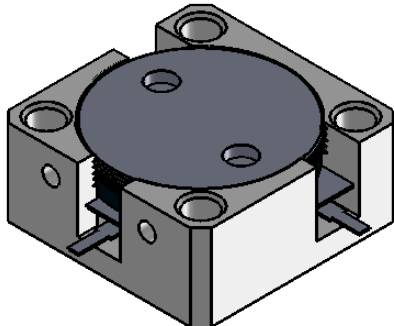


1		2		3		4		5		6	
Document No.	QR4-700-T-003	REV.	A/0	REV.	DESCRIPTION	REVISOR	DATE	APPROVED			
		0		ZC.Wu	10.27.2014	David					



SPECIFICATIONS	
Part's Number	JCD2500T2700SM10
Frequency(GHz)	2.500~2.700
Direction	CW
Insertion Loss(dB)MAX	0.3
Isolation(dB)MIN	20.0
Return Loss(dB)MIN	20.0
3rd IMD(dBc)MAX	-75@2X30W
Power FWD/REV/PK(Watt)	100/100/500
Operating Temperature(°C)	-40~+80
Storage Temperature(°C)	-
2nd/3rd Harmonic(dBc)	-
Termination/Attenuator(Watt/dB)	-
Tab(W×LG×THK)(mm[Inch])	1.0[.0394]×2.5[.098]×0.2[.008]
Additional Notes	Phase matched:±3degree

- NOTES:
- STANDARD INPUT/OUTPUT 50OHM IMPEDANCE
  - BE0 FREE,LEAD FREE,NO Nd MATERIAL
  - RoHS COMPLIANT
  - S-PARAMETERS TO BE MEASURED BYCONNECTING PORT 1 AND PORT 2 TO VNA,PORT 3 TO LOAD
  - LOAD RETURN LOSS IS 30dB OR HIGHER WHEN TUNING



This document is the property of JQL Electronic Inc. It cannot be copied, duplicated, used for manufacturing purposes or communicated to third party as a whole or partly, without the written consent of JQL Electronic Inc.

<b>JQL JQL Electronic Inc</b>			
<b>MATERIAL:</b> STEEL		<b>DWG NO:</b> JCD2500T2700SM10	
<b>SURFACE TREATMENT:</b> NICKEL PLATING		DWG BY:	ZC.Wu
<b>DESCRIPTION:</b> DROP-IN CIRCULATOR		CHK'D BY:	10.27.2014
		APPV'D BY:	SCALE
		Unit:	2:1
		Tolerance:	The First: 
		mm[inch]	
		Liner: ±0.1mm	A4
		Anguar: ±0.5°	