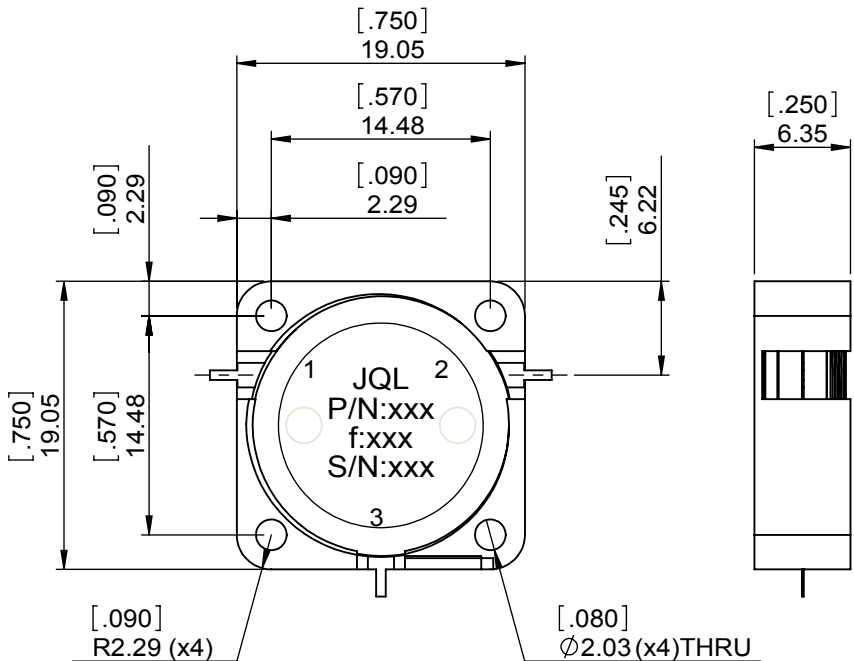
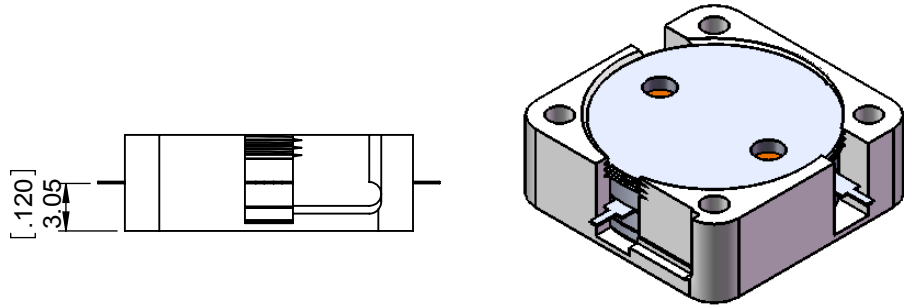


1		2		3		4		5		6			
Document No.	QR4-700-T-003	REV.	A/0	REV.	0	DESCRIPTION		REVISOR	M.Hao	DATE	08.20.2013	APPROVED	David



SPECIFICATIONS	
Part's Number	JCD2700T4000SM1
Frequency(GHz)	2.700~4.000
Direction	CW
Insertion Loss(dB)MAX	1.00
Isolation(dB)MIN	15.0
Return Loss(dB)MIN	15.6
3rd IMD(dBc)MAX	-
Power FWD/REV/PK(Watt)	10/10/-
Operating Temperature(°C)	-30~+85
Storage Temperature(°C)	-
2nd/3rd Harmonic(dBc)	-
Termination/Attenuator(Watt/dB)	-
Tab(W×LG×THK)(mm[Inch])	0.64[0.025]x1.78[0.07]x0.13±0.025[0.005±0.001]
Additional Notes	-

- NOTES:
- STANDARD INPUT/OUTPUT 50OHM IMPEDANCE
 - BEO FREE, LEAD FREE, NO Nd MATERIAL
 - RoHS COMPLIANT
 - S-PARAMETERS TO BE MEASURED BY CONNECTING PORT 1 AND PORT 2 TO VNA, PORT 3 TO LOAD
 - LOAD RETURN LOSS IS 30dB OR HIGHER WHEN TUNING



This document is the property of JQL Electronic Inc. It cannot be copied, duplicated, used for manufacturing purposes or communicated to third party as a whole or partly, without the written consent of JQL Electronic Inc.

JQL	JQL Electronic Inc	500 Lake Cook Road, Suite 350	Tel: 1(888)236-9828
		Deerfield, IL 60015, USA	Fax: 1(888)823-2902

MATERIAL: STEEL	DWG NO: JCD2700T4000SM1			
SURFACE TREATMENT: NICKEL PLATING	DWG BY:	M.Hao	08.20.2013	SACLE
	CHK'D BY:			
DESCRIPTION: DROP IN CIRCULATOR	APPV'D BY:			2:1
	Unit: mm[inch]	Tolerance: Liner: ±0.25 Anguar: ±0.5°	The First:	A4