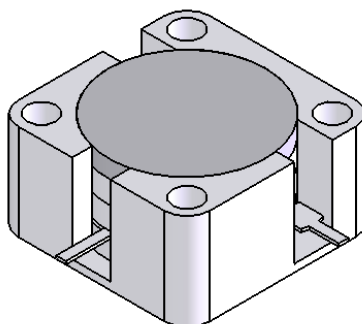
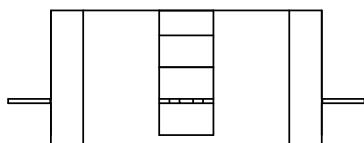


1 2 3 4 5 6

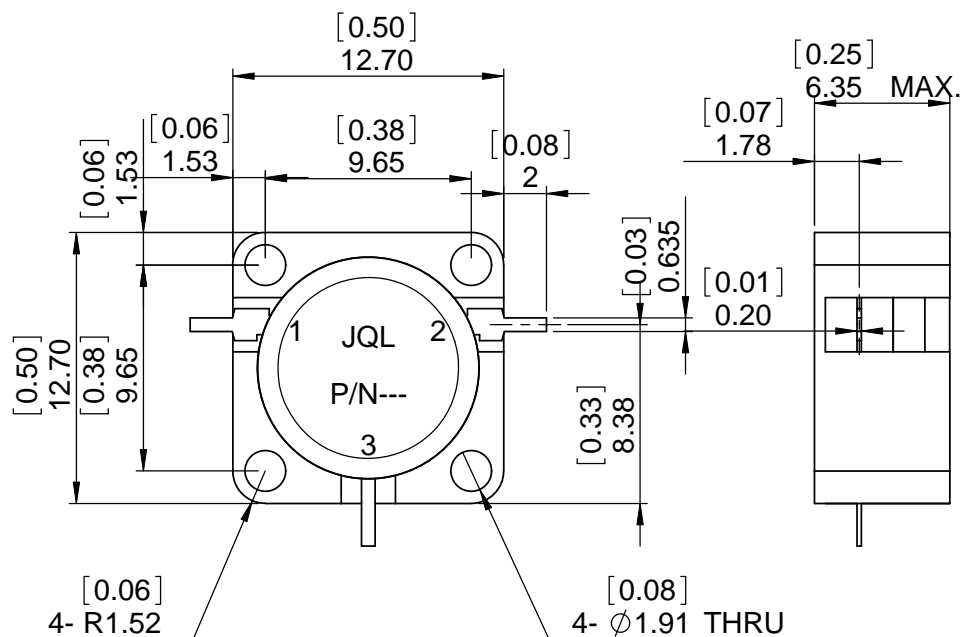
Stock Number

REV.	DESCRIPTION	REVISOR	DATE	APPROVE
0		MH	03.26.11	CH



SPECIFICATION

Part's Number: JCD5800T7100VM1
 Frequency: 5.8~7.1GHz
 Direction: CW
 Insertion Loss: 0.5dB MAX.
 Isolation: 19dB MIN.
 RL: 19dB MIN.
 Power PK/Avg: 10W/10W
 Temperature: -40°C~+85°C



This document is the property of JQL Electronic Inc.
 It cannot be copied, duplicated, used for manufacturing purposes
 or communicated to third party as a whole or partly,
 without the written consent of JQL Electronic Inc.

JQL JQL Electronic Inc

500 Lake Cook Road, Suite 350 Tel : 1(888)236-9828
 Deerfield, IL 60015, USA Fax: 1(630)823-2902

MATERIAL:
STEEL

SURFACE TREATMENT:
NICKLE PLATING

DESCRIPTION:
DROP-IN CIRCULATOR

DWG NO.		SCALE:	
JCD5800T7100VM1		1:1	
DWG BY:	NAME	DATE	Type Of Projection
CHK'D BY:	MH	03.26.11	
APPVD BY:	FW	03.26.11	
Unit: mm		TOLERANCE: Liner: ±0.1mm Angular: ±0.5°	A4

WEIGHT:

SHEET 1 OF 1