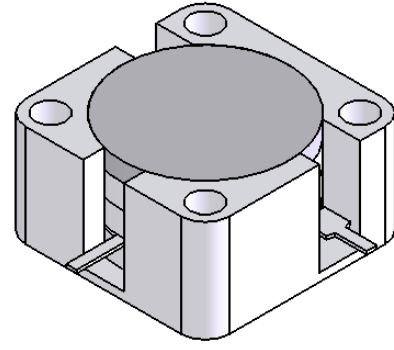
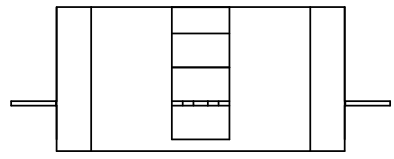


1 2 3 4 5 6

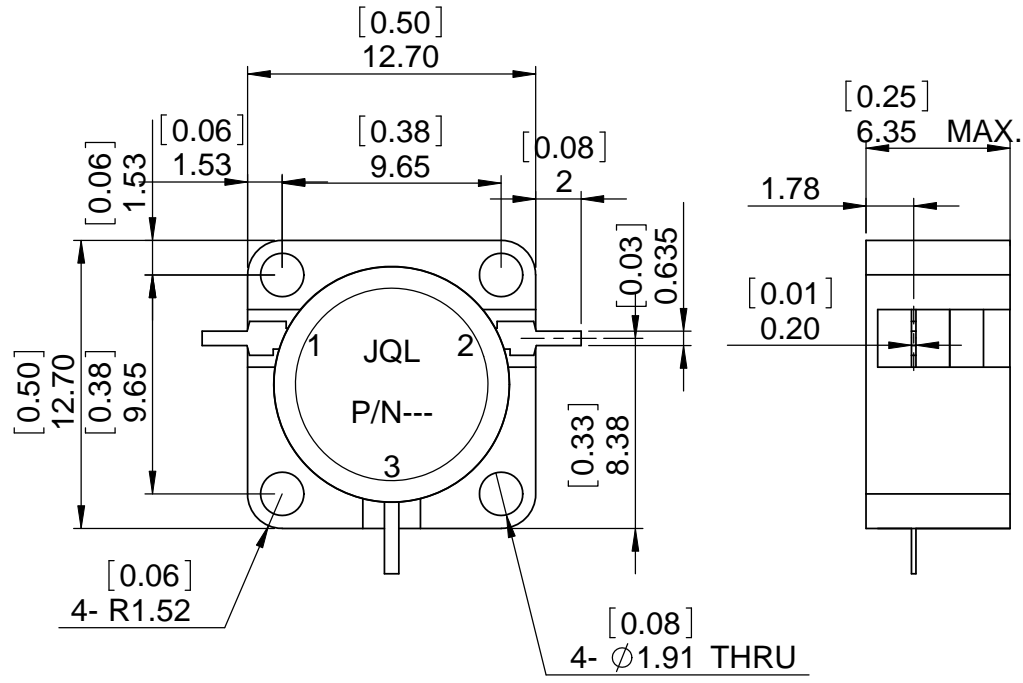
Stock Number

REV.	DESCRIPTION	REVISOR	DATE	APPROVE
0		MH	03.26.11	CH



SPECIFICATION

Part's Number: JCD6800T7800VM3
 Frequency: 6.800~7.800GHz
 Direction: CW
 Insertion Loss: 0.4dB MAX.
 Isolation: 20dB MIN.
 VSWR: 1.25:1 MAX
 Power : 30W
 Temperature: -40°C~+85°C



This document is the property of JQL Electronic Inc. It cannot be copied, duplicated, used for manufacturing purposes or communicated to third party as a whole or partly, without the written consent of JQL Electronic Inc.

JQL JQL Electronic Inc 500 Lake Cook Road, Suite 350 Deerfield, IL 60015, USA Tel : 1(888)236-9828 Fax: 1(630)823-2902

MATERIAL: STEEL	DWG NO. JCD6800T7680VM3		
SURFACE TREATMENT: NICKLE PLATING	NAME MH	DATE 03.26.11	SCALE: 1:1
DESCRIPTION: DROP-IN CIRCULATOR	CHK'D BY: FW	03.26.11	1:1
	APPV'D BY: CH	03.26.11	
Unit: mm	TOLERANCE: Liner: ±0.1mm Angular: ±0.5°	Type Of Projection 	A4