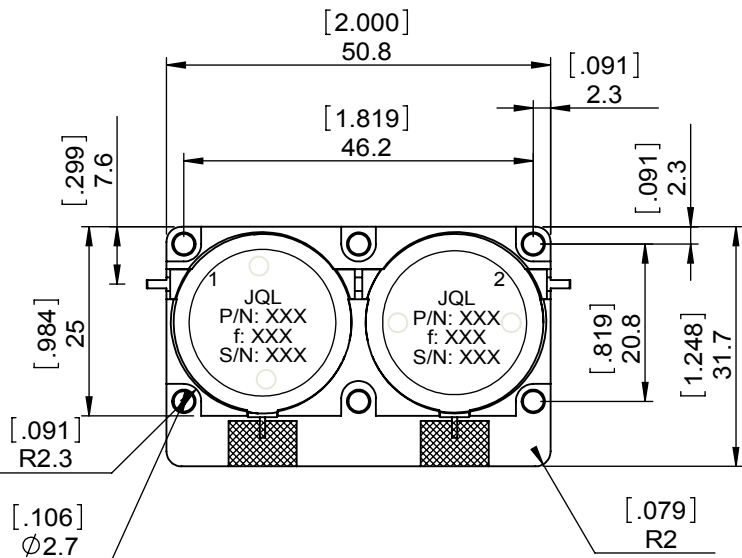
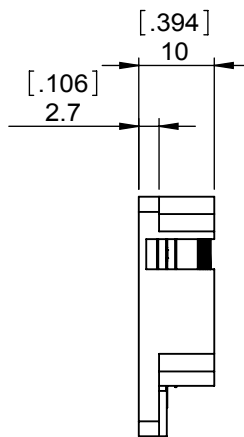
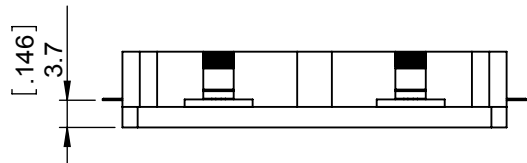
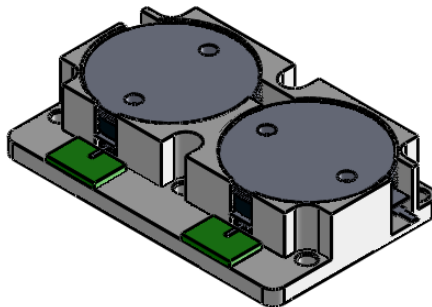


1		2		3		4		5		6	
Document No.	QR4-700-T-003	REV.	A/0	REV.	DESCRIPTION	REVISOR	DATE	APPROVED			
				0		M.Hao	07.09.2013	David			



SPECIFICATIONS	
Part's Number	J12D0830T0845M10
Frequency(GHz)	0.830~0.845
Direction	CW
Insertion Loss(dB)MAX	0.4dB MAX.@0.830~0.845GHz
Isolation(dB)MIN	65.0dB MIN@0.815~0.830GHz
Return Loss(dB)MIN	21.0 MIN.@0.830~0.845GHz
3rd IMD(dBc)MAX	-65dBc@2x30W,spacing 4MHz
Power FWD/REV/PK(Watt)	100/60/500
Operating Temperature(°C)	-15~+55
Storage Temperature(°C)	-
2nd/3rd Harmonic(dBc)	-
Termination/Attenuator(Watt/dB)	-
Tab(W×LG×THK)(mm[Inch])	1.1[.043]×2.5[.098]×0.2[.008]
Additional Notes	-

JQL JQL Electronic Inc 500 Lake Cook Road, Suite 350 Deerfield, IL 60015, USA Tel: 1(888)236-9828 Fax: 1(888)823-2902

MATERIAL: STEEL	DWG NO: J12D0830T0845M10			
SURFACE TREATMENT: NICKEL PLATING	DWG BY:	M.Hao	07.09.2013	SACLE
	CHK'D BY:			
DESCRIPTION DUAL JUNCTION DROP-IN ISOLATOR	APP'VD BY:			1:1
	Unit: mm[inch]	Tolerance: Liner: ±0.25 Anguar: ±0.5°	The First:	A4



This document is the property of JQL Electronic Inc. It cannot be copied, duplicated, used for manufacturing purposes or communicated to third party as a whole or partly, without the written consent of JQL Electronic Inc.