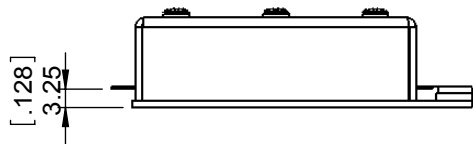
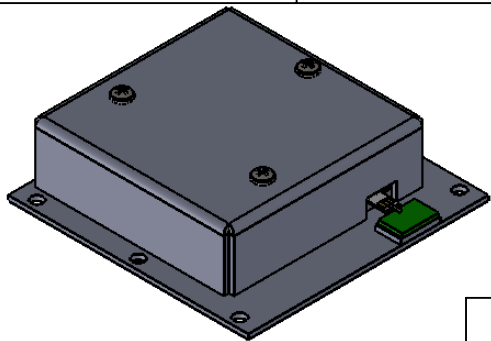
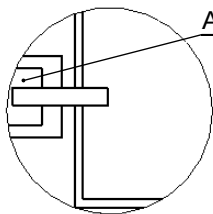
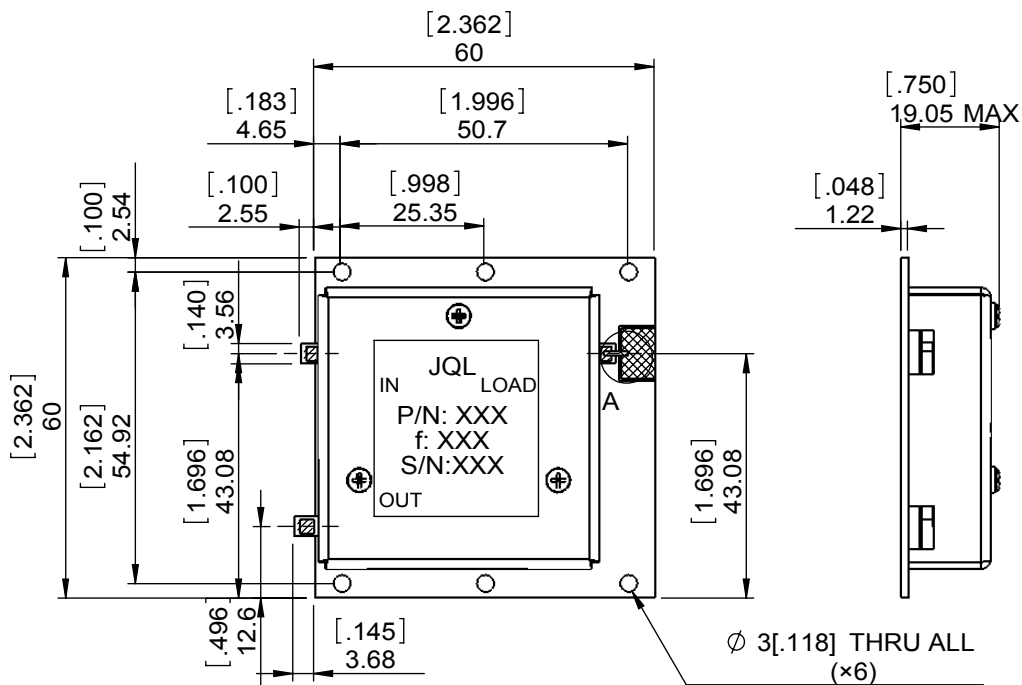


1		2		3		4		5		6	
Document No.	QR4-700-T-003					REV.	DESCRIPTION	REVISOR	DATE	APPROVED	
REV.	A/0					0		LJ.Zhang	03.11.2014	David	



SPECIFICATIONS	
Part's Number	JID0180T0220P5
Frequency(GHz)	0.180~0.220
Direction	CW
Insertion Loss(dB)MAX	0.80
Isolation(dB)MIN	18.0
Return Loss(dB)MIN	17.7
3rd IMD(dBc)MAX	-
Power FWD/REV/PK(Watt)	50/50/500(max pulse width: 1ms)
Operating Temperature(°C)	-50~+80
Storage Temperature(°C)	-
2nd/3rd Harmonic(dBc)	-
Termination/Attenuator(Watt/dB)	100/-
Tab(W×LG×THK)(mm[Inch])	-
Additional Notes	-



APPLY SODER(x3)

DETAIL A  
SCALE 3 : 1



This document is the property of JQL Electronic Inc. It cannot be copied, duplicated, used for manufacturing purposes or communicated to third party as a whole or partly, without the written consent of JQL Electronic Inc.

<b>JQL</b>	<b>JQL Electronic Inc</b>	500 Lake Cook Road, Suite 350 Deerfield, IL 60015, USA		Tel: 1(888)236-9828 Fax: 1(888)823-2902	

<b>MATERIAL:</b> STEEL	<b>DWG NO:</b> JID0180T0220P5			
	DWG BY:	LJ.Zhang	03.11.2014	SACLE
<b>SURFACE TREATMENT:</b> NICKEL PLATING	CHK'D BY:			
	APPV'D BY:			
<b>DESCRIPTION:</b> DROP-IN ISOLATOR	Unit:	Tolerance:	The First:	
	mm[inch]	Liner: ±0.25	3:4	
		Anguar: ±0.5°	A4	

WEIGHT:

5

SHEET 1 OF 1