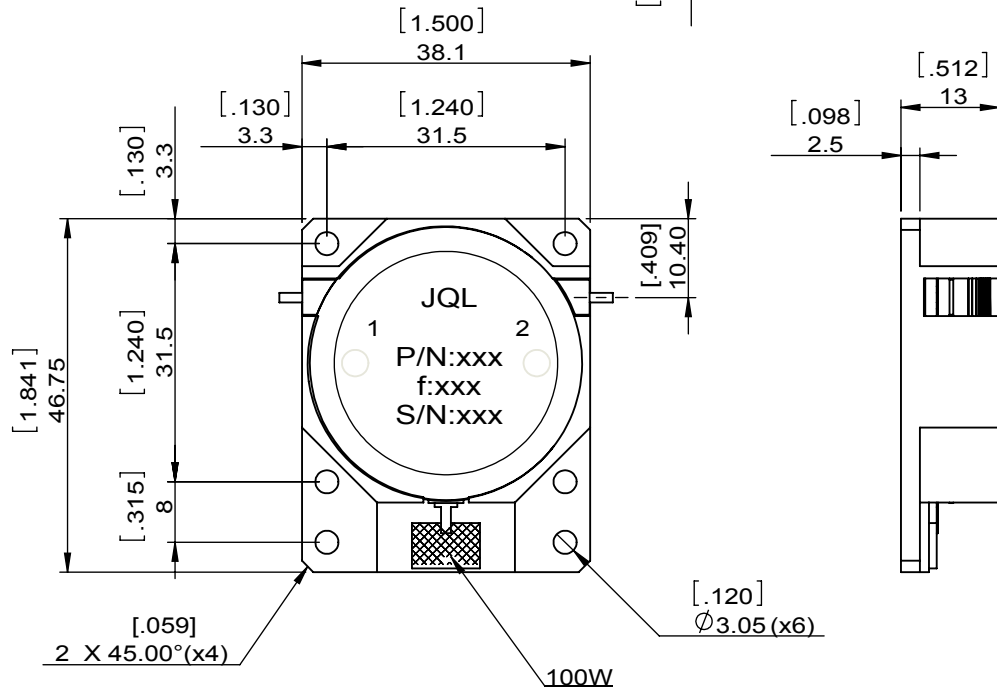
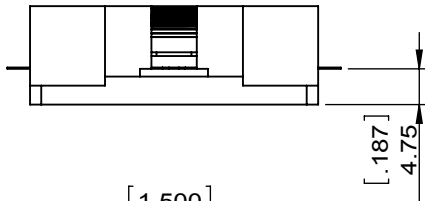
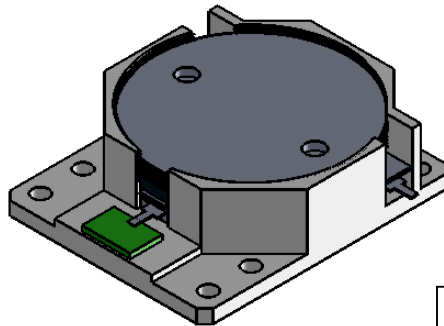


1		2		3		4		5		6	
Document No. QR4-700-T-003		REV. A/0		REV. 0		DESCRIPTION		REVISOR ZC.Wu		DATE 08.11.2015	
										APPROVED David	



SPECIFICATIONS	
Part's Number	JID0390T0400KM10
Frequency(GHz)	0.390~0.400
Direction	CW
Insertion Loss(dB)MAX	0.25
Isolation(dB)MIN	25.0
Return Loss(dB)MIN	23.0
3rd IMD(dBc)MAX	-65@2x50W
Power FWD/REV/PK(Watt)	150/100/500
Operating Temperature(°C)	-30~+70
Storage Temperature(°C)	-
2nd/3rd Harmonic(dBc)	-
Termination/Attenuator(Watt/dB)	100/-
Tab(W×LG×THK)(mm[Inch])	1.30[0.051]x3[0.118]x0.2[0.008]
Additional Notes	-Internal Control -67@2x50W

JQL JQL Electronic Inc	
MATERIAL: STEEL	DWG NO: JID0390T0400KM10
SURFACE TREATMENT: NICKEL PLATING	DWG BY: ZC.Wu 08.11.2015 SCALE
DESCRIPTION: DROP-IN ISOLATOR	CHK'D BY: APPV'D BY: Unit: mm[inch] Tolerance: Liner: ±0.25 Anguar: ±0.5°
	The First: 1:1 A4



This document is the property of JQL Electronic Inc. It cannot be copied, duplicated, used for manufacturing purposes or communicated to third party as a whole or partly, without the written consent of JQL Electronic Inc.

WEIGHT:

SHEET 1 OF 1