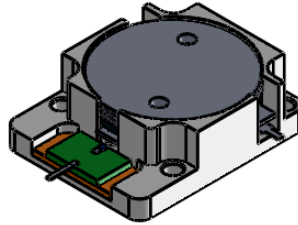
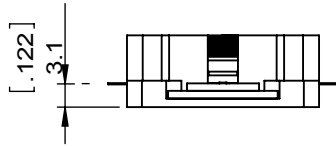
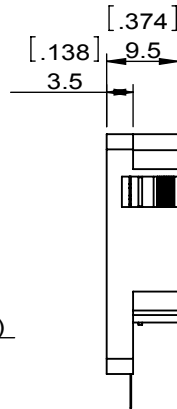
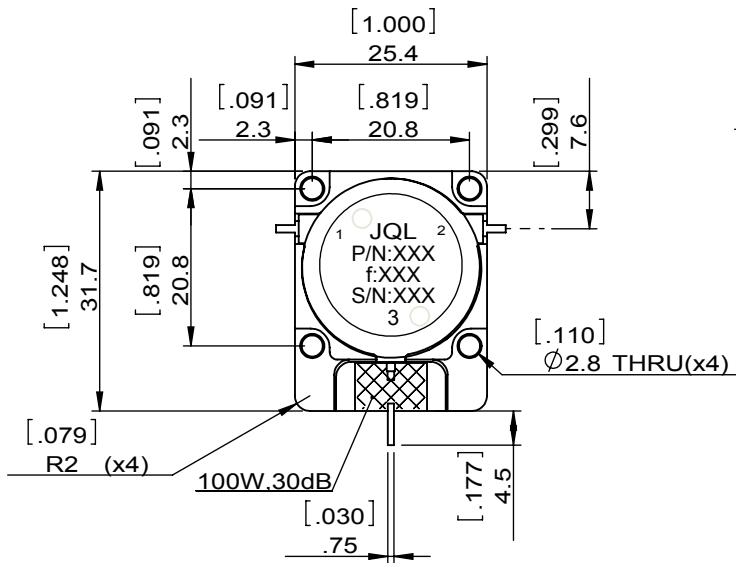


1		2		3		4		5		6	
Document No.	QR4-700-T-003	REV.	A/0	REV.	DESCRIPTION	REVISOR	DATE	APPROVED			
				0		ZC.Wu	03.11.2015	David			



SPECIFICATIONS	
Part's Number	JID0791T0821M10A3
Frequency(GHz)	0.791~0.821
Direction	CW
Insertion Loss(dB)MAX	0.17 Type 0.20 MAX.
Isolation(dB)MIN	24.0
Return Loss(dB)MIN	24.0
3rd IMD(dBc)MAX	-75@2X43dBm, tones, Spacing 5MHz
Power FWD/REV/PK(Watt)	100/70/-
Operating Temperature(°C)	-20~+85
Storage Temperature(°C)	--
2nd/3rd Harmonic(dBc)	--
Termination/Attenuator(Watt/dB)	100/30
Tab(W×LG×THK)(mm[Inch])	1.0[.039]x2.5[0.098]x0.2[.008]
Additional Notes	Impedance:50 ohms nominal--



This document is the property of JQL Electronic Inc. It cannot be copied, duplicated, used for manufacturing purposes or communicated to third party as a whole or partly, without the written consent of JQL Electronic Inc.

<b>JQL</b> JQL Electronic Inc				
<b>MATERIAL:</b> STEEL		<b>DWG NO:</b> JID0791T0821M10A3		
<b>SURFACE TREATMENT:</b> NICKEL PLATING		DWG BY:	ZC.Wu	03.11.2015
<b>DESCRIPTION:</b> DROP-IN ISOLATOR		CHK'D BY:		SCALE
		APPV'D BY:		1:1
		Unit: mm[inch]	Tolerance: Liner: ±0.25 Anguar: ±0.5°	The First: 
				A4