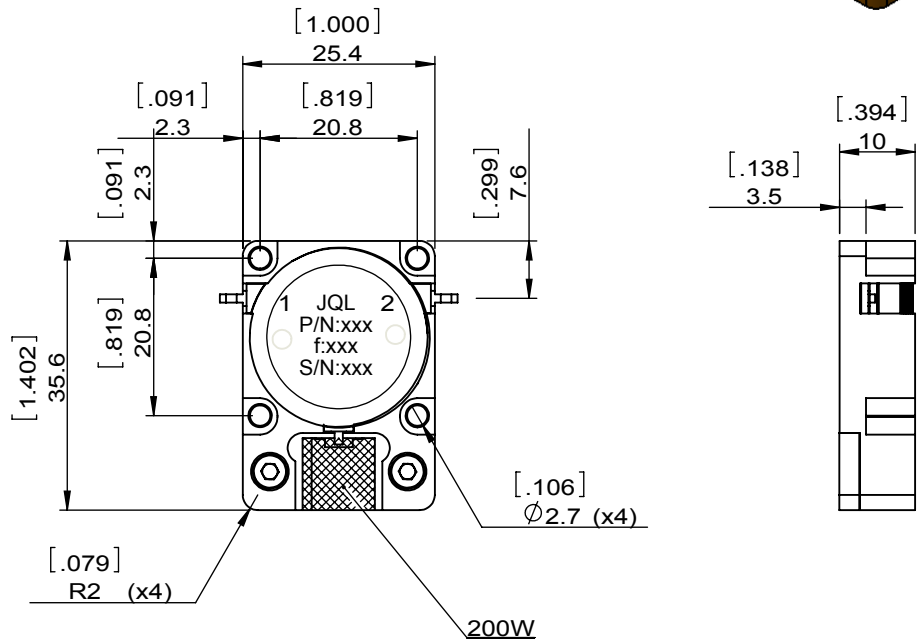
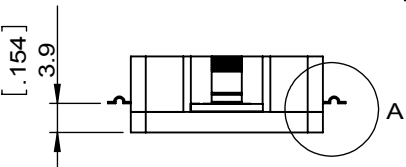
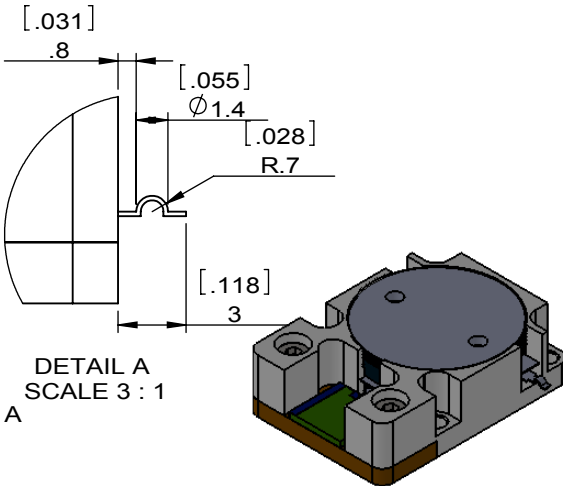


1		2		3		4		5		6	
Document No. QR4-700-T-003		[.031]				REV.		DESCRIPTION		APPROVED	
REV. A/0		.8				0				CH	
		[.055]				1		adding omega bending to the circuit		David	
		Ø1.4									
		[.028]									
		R.7									
		[.118]									
		3									



SPECIFICATIONS	
Part's Number	JID1280T1300M20
Frequency(GHz)	1.280~1.300
Direction	CW
Insertion Loss(dB)MAX	0.25
Isolation(dB)MIN	22.0
Return Loss(dB)MIN	22
3rd IMD(dBc)MAX	-
Power FWD/REV/PK(Watt)	600PULSE/600PULSE/600PULSE
Operating Temperature(°C)	-20~+85
Storage Temperature(°C)	-55~125
2nd/3rd Harmonic(dBc)	-
Termination/Attenuator(Watt/dB)	200
Tab(W×LG×THK)(mm[Inch])	1.2[.047]x3.0[.118]x0.2[0.008]
Additional Notes	Pulse : 70usec (Duty ratio : 35%)-

<b>JQL</b> JQL Electronic Inc				
<b>MATERIAL:</b> STEEL		<b>DWG NO:</b> JID1280T1300M20		
<b>SURFACE TREATMENT:</b> NICKEL PLATING		DWG BY:	ZC.Wu	10.20.2014
<b>DESCRIPTION:</b> DROP-IN ISOLATOR		CHK'D BY:		SCALE
		APPV'D BY:		1:1
		Unit: mm[inch]	Tolerance: Liner: ±0.25 Anguar: ±0.5°	The First: 
				A4



This document is the property of JQL Electronic Inc. It cannot be copied, duplicated, used for manufacturing purposes or communicated to third party as a whole or partly, without the written consent of JQL Electronic Inc.