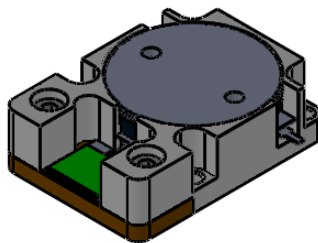
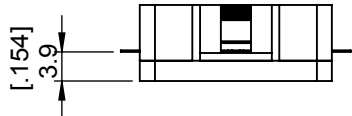
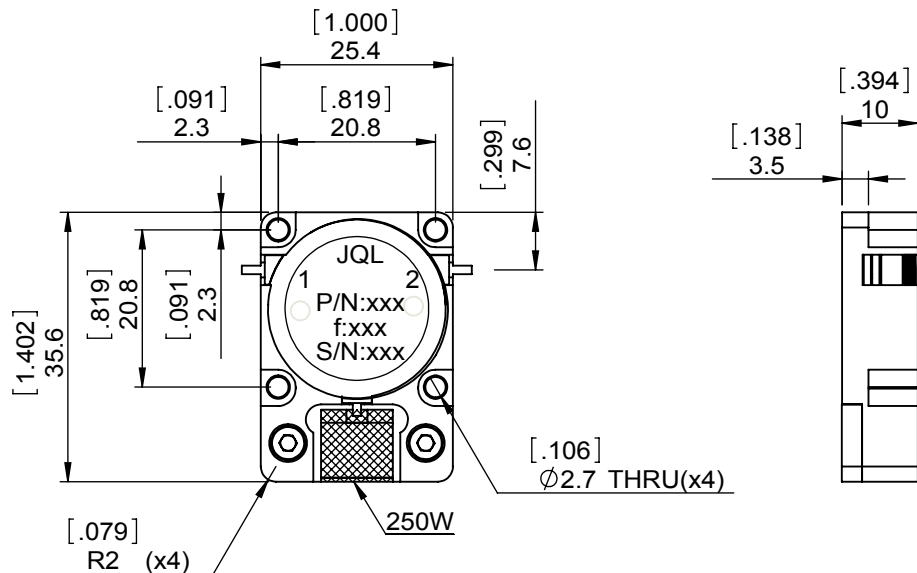


1		2		3		4		5		6	
Document No. QR4-700-T-003		REV. A/0		REV. 0		DESCRIPTION		REVISOR LJ.Zhang		DATE 08.30.2013	
										APPROVED David	



SPECIFICATIONS	
Part's Number	JID1420T1550M20
Frequency(GHz)	1.420~1.550
Direction	CW
Insertion Loss(dB)MAX	0.25
Isolation(dB)MIN	20.0
Return Loss(dB)MIN	20.0
3rd IMD(dBc)MAX	-
Power FWD/REV/PK(Watt)	200/200/-
Operating Temperature(°C)	-20~+85
Storage Temperature(°C)	-
2nd/3rd Harmonic(dBc)	-
Termination/Attenuator(Watt/dB)	250/-
Tab(W×LG×THK)(mm[Inch])	1.2[.047]x2.5[.098]x0.2[.008]
Additional Notes	-



<b>JQL</b> JQL Electronic Inc		500 Lake Cook Road, Suite 350 Deerfield, IL 60015, USA		Tel: 1(888)236-9828 Fax: 1(888)823-2902	
<b>MATERIAL:</b> STEEL		<b>DWG NO:</b> JID1420T1550M20			
<b>SURFACE TREATMENT:</b> NICKEL PLATING		DWG BY:	LJ.Zhang	08.30.2013	SACLE
<b>DESCRIPTION:</b> DROP-IN ISOLATOR		CHK'D BY:			
		APPV'D BY:			1:1
		Unit: mm[inch]	Tolerance: Liner: ±0.25 Anguar: ±0.5°	The First:	A4



This document is the property of JQL Electronic Inc. It cannot be copied, duplicated, used for manufacturing purposes or communicated to third party as a whole or partly, without the written consent of JQL Electronic Inc.