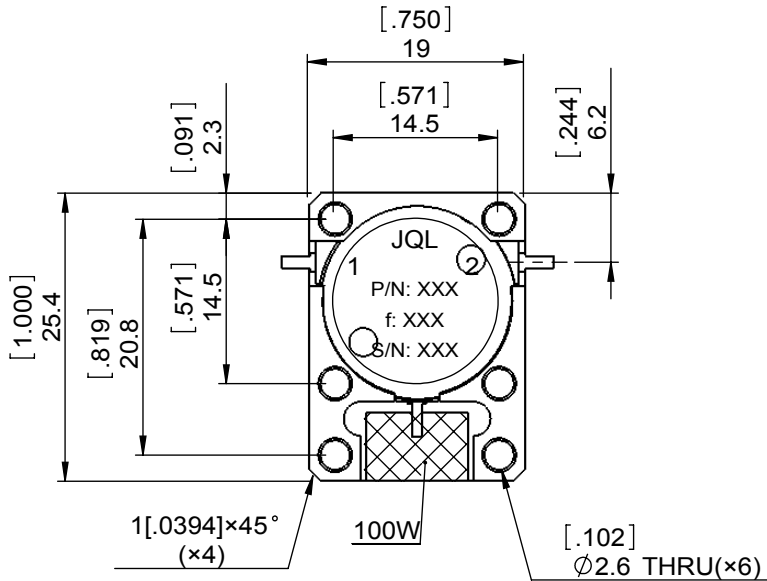
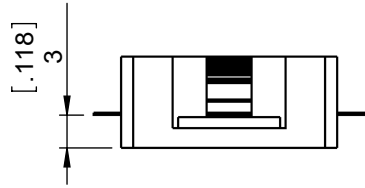
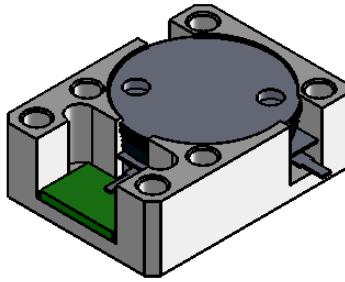


1		2		3		4		5		6	
Document No.	QR4-700-T-003	REV.	A/0	REV.	DESCRIPTION	REVISOR	DATE	APPROVED			
		0		LJ.Zhang	08.09.2013	David					



SPECIFICATIONS	
Part's Number	JID1625T1660SM10
Frequency(GHz)	1.625~1.660
Direction	CW
Insertion Loss(dB)MAX	0.35 0.30 TYPE
Isolation(dB)MIN	20.0
Return Loss(dB)MIN	21.0
3rd IMD(dBc)MAX	-50 @ 2×15W
Power FWD/REV/PK(Watt)	100/80/140
Operating Temperature(°C)	-40~+90
Storage Temperature(°C)	-
2nd/3rd Harmonic(dBc)	28.0/9.0
Termination/Attenuator(Watt/dB)	100/-
Tab(W×LG×THK)(mm[Inch])	0.7[.027]×3.81[.15]×0.2[.008]-
Additional Notes	-

JQL **JQL Electronic Inc** 500 Lake Cook Road, Suite 350 Deerfield, IL 60015, USA Tel: 1(888)236-9828 Fax: 1(888)823-2902

MATERIAL: STEEL	DWG NO: JID1625T1660SM10			
SURFACE TREATMENT: NICKEL PLATING	DWG BY:	LJ.Zhang	08.09.2013	SACLE
	CHK'D BY:			
DESCRIPTION: DROP-IN ISOLATOR	APPV'D BY:			3:2
	Unit: mm[inch]	Tolerance: Liner: ±0.25 Anguar: ±0.5°	The First:	A4



This document is the property of JQL Electronic Inc. It cannot be copied, duplicated, used for manufacturing purposes or communicated to third party as a whole or partly, without the written consent of JQL Electronic Inc.