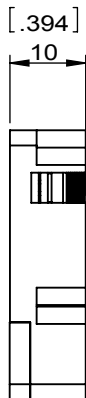
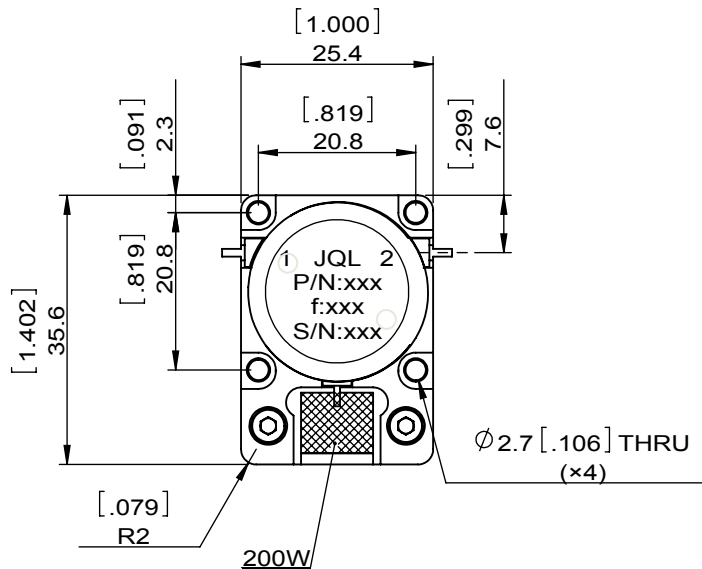
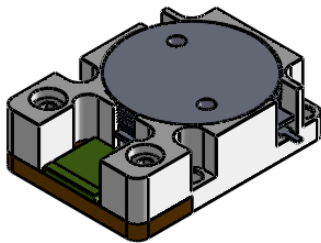
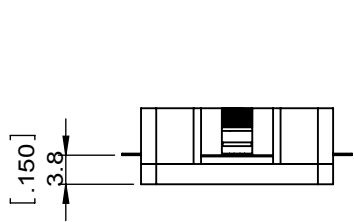


1		2		3		4		5		6	
Document No.	QR4-700-T-003	REV.	A/0	REV.	DESCRIPTION	REVISOR	DATE	APPROVED			
		0		LJ.Zhang	06.25.2015	David					



SPECIFICATIONS	
Part's Number	JID2700T2900M12K
Frequency(GHz)	2.700~2.900
Direction	CW
Insertion Loss(dB)MAX	0.25
Isolation(dB)MIN	20
Return Loss(dB)MIN	20.0
3rd IMD(dBc)MAX	-
Power FWD PK/REV PK(Watt)	1200/1200 pulse with 300us duty cycle
Operating Temperature(°C)	-40~+85
Storage Temperature(°C)	-
2nd/3rd Harmonic(dBc)	-
Termination/Attenuator(Watt/dB)	200
Tab(W×LG×THK)(mm[Inch])	1.1[.433]WX2.5[.098]LGX0.2[.008]THK
Additional Notes	-

JQL JQL Electronic Inc				
MATERIAL: STEEL		DWG NO: JID2700T2900M12K		
SURFACE TREATMENT: NICKEL PLATING		DWG BY:	LJ.Zhang	06.25.2015
DESCRIPTION: DROP IN ISOLATOR		CHK'D BY:		SCALE
		APPV'D BY:		1:1
		Unit: mm[inch]	Tolerance: Liner: ±0.25 Anguar: ±0.5°	The First:
				A4



This document is the property of JQL Electronic Inc. It cannot be copied, duplicated, used for manufacturing purposes or communicated to third party as a whole or partly, without the written consent of JQL Electronic Inc.