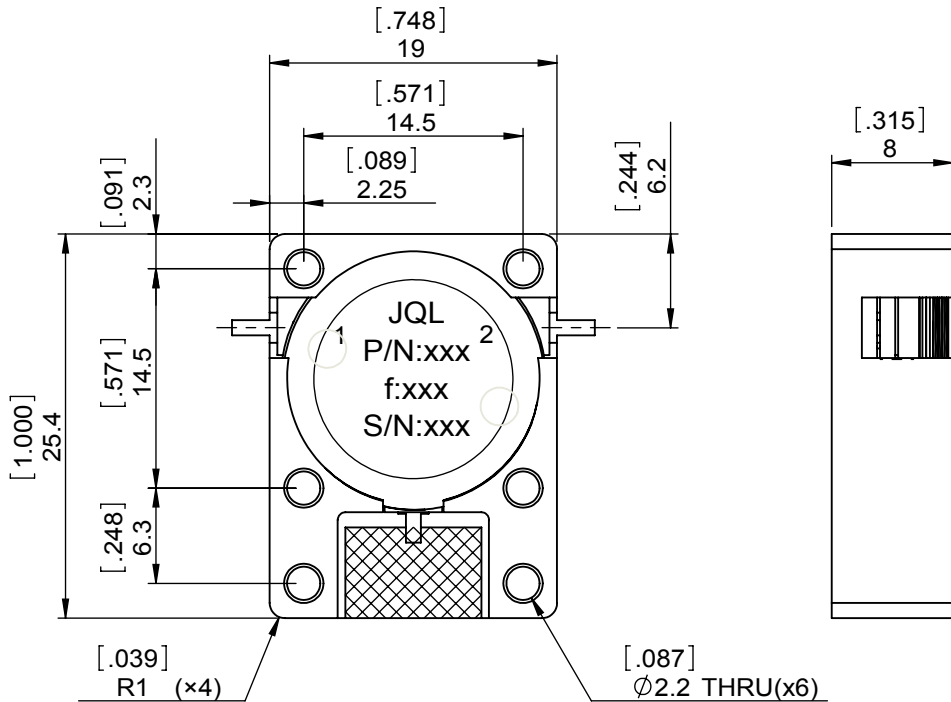
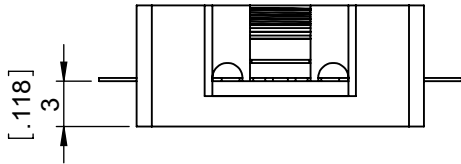
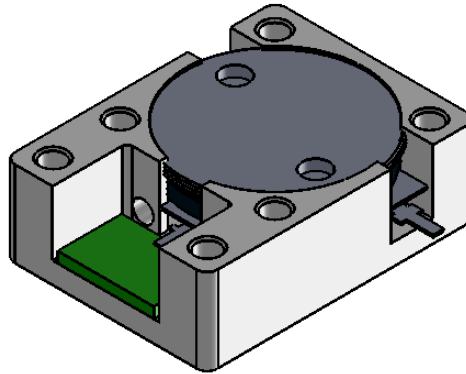


1		2		3		4		5		6	
Document No. QR4-700-T-003		REV. A/0		REV. 0		DESCRIPTION		REVISOR M.Hao		DATE 10.23.2013	
										APPROVED David	



SPECIFICATIONS	
Part's Number	JID2700T3100SM10
Frequency(GHz)	2.700~3.100
Direction	CW
Insertion Loss(dB)MAX	0.30
Isolation(dB)MIN	20.0
Return Loss(dB)MIN	20.0
3rd IMD(dBc)MAX	-
Power FWD/REV/PK(Watt)	100/100/500
Operating Temperature(°C)	-40~+85
Storage Temperature(°C)	-55~+125
2nd/3rd Harmonic(dBc)	-
Termination/Attenuator(Watt/dB)	100
Tab(W×LG×THK)(mm[Inch])	1[0.039]x2.5[0.098]x0.2[0.008]
Additional Notes	-

**JQL** **JQL Electronic Inc** 500 Lake Cook Road, Suite 350 Deerfield, IL 60015, USA Tel: 1(888)236-9828 Fax: 1(888)823-2902

<b>MATERIAL:</b> STEEL	<b>DWG NO:</b> JID2700T3100SM10T			
<b>SURFACE TREATMENT:</b> NICKEL PLATING	DWG BY:	M.Hao	10.23.2013	SACLE
	CHK'D BY:			
<b>DESCRIPTION:</b> DROP IN ISOLATOR	APPV'D BY:			2:1
	Unit: mm[inch]	Tolerance: Liner: ±0.25 Anguar: ±0.5°	The First:	A4



This document is the property of JQL Electronic Inc. It cannot be copied, duplicated, used for manufacturing purposes or communicated to third party as a whole or partly, without the written consent of JQL Electronic Inc.

WEIGHT:

SHEET 1 OF 1