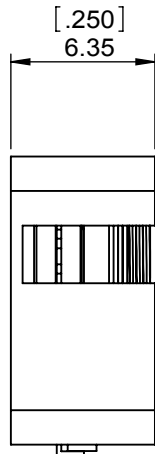
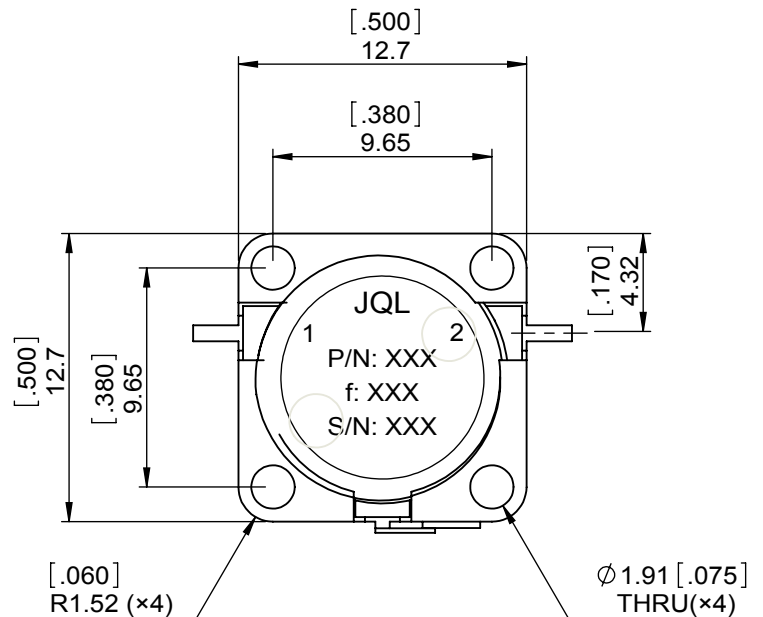
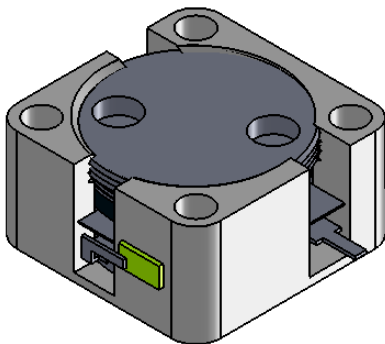
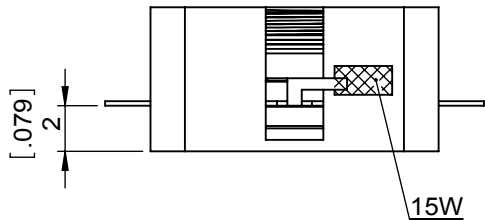


1		2		3		4		5		6	
Document No.	QR4-700-T-003					REV.	DESCRIPTION	REVISOR	DATE	APPROVED	
REV.	A/0					0		LJ.Zhang	03.25.2014	David	



SPECIFICATIONS	
Part's Number	JID3500T5200VM0
Frequency(GHz)	3.500~5.200
Direction	CW
Insertion Loss(dB)MAX	0.60
Isolation(dB)MIN	17.0
Return Loss(dB)MIN	17.0
3rd IMD(dBc)MAX	-
Power FWD/REV/PK(Watt)	5/1/-
Operating Temperature(°C)	0~+60
Storage Temperature(°C)	
2nd/3rd Harmonic(dBc)	-
Termination/Attenuator(Watt/dB)	15W
Tab(W×LG×THK)(mm[Inch])	0.7[.028]×2.0[.078]×0.15[.006]
Additional Notes	-

**JQL** **JQL Electronic Inc** 500 Lake Cook Road, Suite 350 Deerfield, IL 60015, USA Tel: 1(888)236-9828 Fax: 1(888)823-2902

<b>MATERIAL:</b> STEEL	<b>DWG NO:</b> JID3500T5200VM0			
	DWG BY:	LJ.Zhang	03.25.2014	SACLE
<b>SURFACE TREATMENT:</b> NICKEL PLATING	CHK'D BY:			
	APPV'D BY:			3:1
<b>DESCRIPTION:</b> DROP-IN ISOLATOR	Unit:	Tolerance:	The First:	
	mm[inch]	Liner: ±0.25		
		Anguar: ±0.5°	A4	



This document is the property of JQL Electronic Inc. It cannot be copied, duplicated, used for manufacturing purposes or communicated to third party as a whole or partly, without the written consent of JQL Electronic Inc.