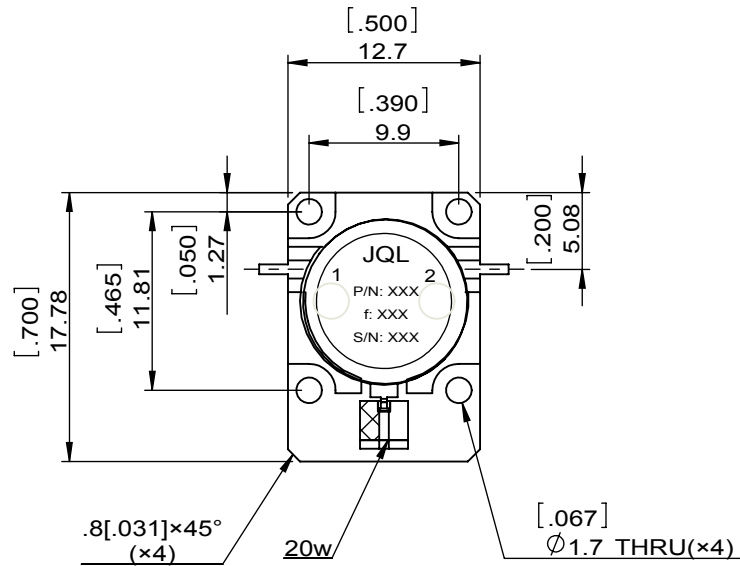
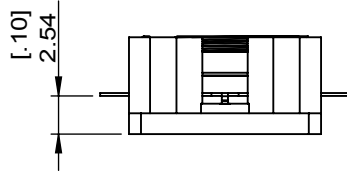
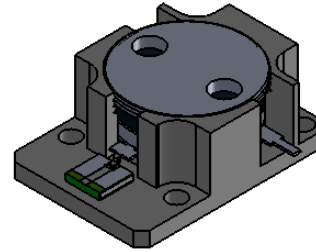


1	2
Document No.	QR4-700-T-003
REV.	A/0

4	5	6		
REV.	DESCRIPTION	REVISOR	DATE	APPROVED
0		ZC.Wu	01.19.2015	David
1	Add Storage Temp.	ZC.Wu	06.10.2015	David



SPECIFICATIONS	
Part's Number	JID7400T7800VM2
Frequency(GHz)	7.400~7.800
Direction	CW
Insertion Loss(dB)MAX	0.40
Isolation(dB)MIN	20.0
Return Loss(dB)MIN	20.0
3rd IMD(dBc)MAX	-
Power FWD/REV/PK(Watt)	10/10/-
Operating Temperature(°C)	-30~+85
Storage Temperature(°C)	-40~+85
2nd/3rd Harmonic(dBc)	-
Termination/Attenuator(Watt/dB)	20/-
Tab(W×LG×THK)(mm[Inch])	.635[.025]×1.90[.075]×.15[.006]-
Additional Notes	-

JQL JQL Electronic Inc				
MATERIAL: STEEL		DWG NO: JID7400T7800VM2		
SURFACE TREATMENT: NICKEL PLAINING		DWG BY:	ZC.Wu	01.19.2015
DESCRIPTION: DROP-IN ISOLATOR		CHK'D BY:		SCALE
		APPV'D BY:		2:1
Unit: mm[inch]	Tolerance: Liner: ±0.25 Anguar: ±0.5°	The First:		A4



This document is the property of JQL Electronic Inc. It cannot be copied, duplicated, used for manufacturing purposes or communicated to third party as a whole or partly, without the written consent of JQL Electronic Inc.