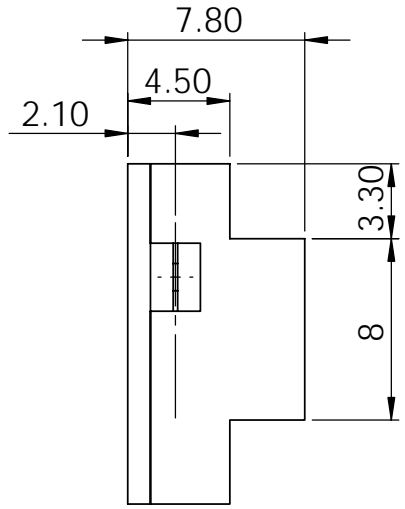
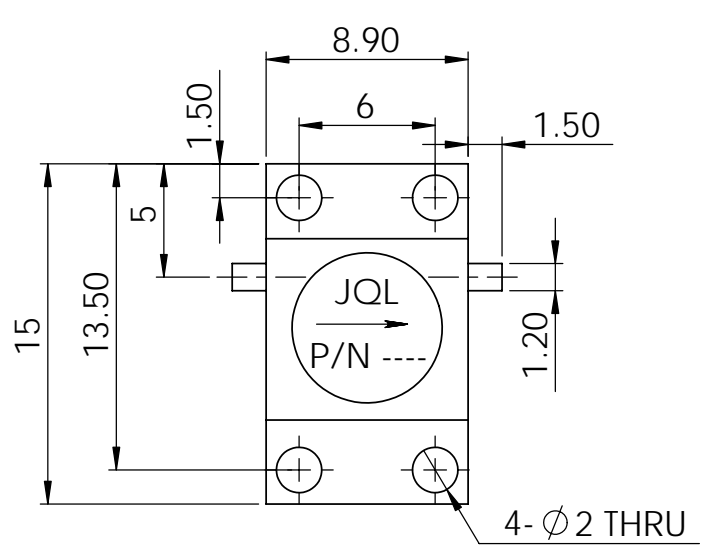


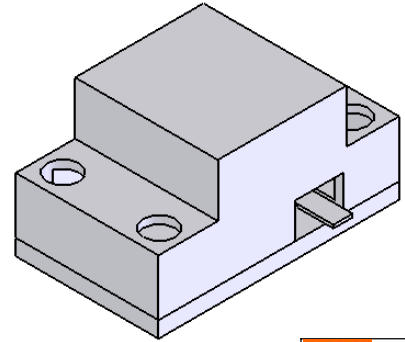
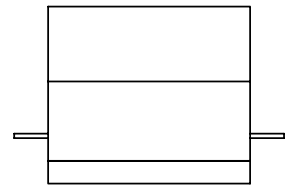
5		6		
REV.	DESCRIPTION	REVISOR	DATE	APPROVE



SPECIFICATIONS

P/N: JID8000T12K0G1KL
 FREQ: 8~12GHz

ISOLATION: 18dB MIN
 INSERTION LOSS: 0.5dB MAX
 VSWR: 1.3:1 MAX
 PWR FWD/REV: 15W/5W
 CIRCULATION: CLOCKWISE
 TEMPERATURE OPERATING: -35C~+75C
 STORAGE: -55C~+125C



This document is the property of JQL Electronic Inc. It cannot be copied, duplicated, used for manufacturing purposes or communicated to third party as a whole or partly, without the written consent of JQL Electronic Inc.

JQL JQL Electronic Inc		500 Lake Cook Road, Suite 350 Deerfield, IL 60015, USA		Tel : 1(888)236-9828 Fax: 1(630)823-2902	
MATERIAL: VARIOUS		DWG NO. JID8000T12K0G1KL			
SURFACE TREATMENT:					
DESCRIPTION: DROP-IN ISOLATOR					
		TOLERANCE Liner: ±0.1mm Angular: ±0.5°		Q.A	

	NAME	DATE	SIGNATURE	REV:
DWG BY:	SY	10.13.08		
CHK'D BY:	GC	10.13.08		0
APPV'D BY:	JZ	10.13.08		
				A4