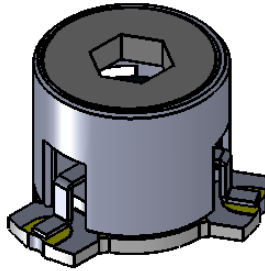
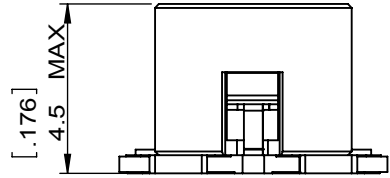
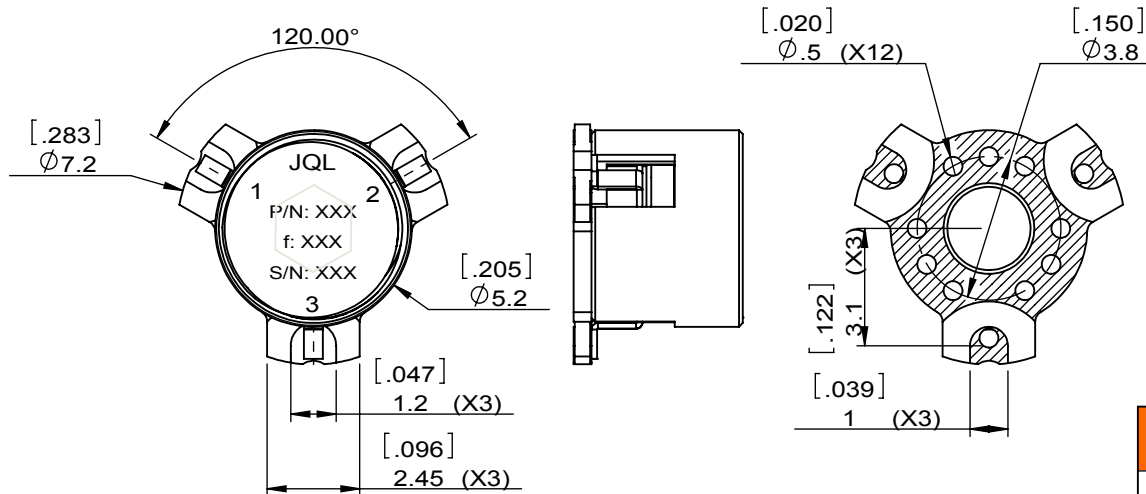


1	2
Document No.	QR4-700-T-003
REV.	A/0

4	5	6		
REV.	DESCRIPTION	REVISOR	DATE	APPROVED
0		ZC.Wu	10.30.2015	David
1	Changed PCB size	ZC.Wu	12.04.2015	David



SPECIFICATIONS	
Part's Number	JCM9000T9200XM1
Frequency(GHz)	9.000~9.200
Direction	CW
Insertion Loss(dB)MAX	0.5@25°C 0.7@-40~+95°C
Isolation(dB)MIN	20.0@25°C 18.0@-40~+95°C
Return Loss(dB)MIN	19.0@25°C 17.7@-40~+95°C
3rd IMD(dBc)MAX	-
Power FWD/REV/PK(Watt)	10/-/20 D.C20%@300 usec
Operating Temperature(°C)	-40~+95
Storage Temperature(°C)	-
2nd/3rd Harmonic(dBc)	-
Termination/Attenuator(Watt/dB)	-
Tab(W×LG×THK)(mm[Inch])	-
Additional Notes	-



<b>JQL</b> JQL Electronic Inc				
<b>MATERIAL:</b> STEEL		<b>DWG NO:</b> JCM9000T9200XM1		
<b>SURFACE TREATMENT:</b> GOLD PLATED		DWG BY:	ZC.Wu	10.30.2015
<b>DESCRIPTION:</b> SMT CIRCULATOR		CHK'D BY:		SCALE
		APPV'D BY:		5:1
		Unit: mm[inch]	Tolerance: Liner: ±0.25 Anguar: ±0.5°	The First: 
				A4



This document is the property of JQL Electronic Inc. It cannot be copied, duplicated, used for manufacturing purposes or communicated to third party as a whole or partly, without the written consent of JQL Electronic Inc.