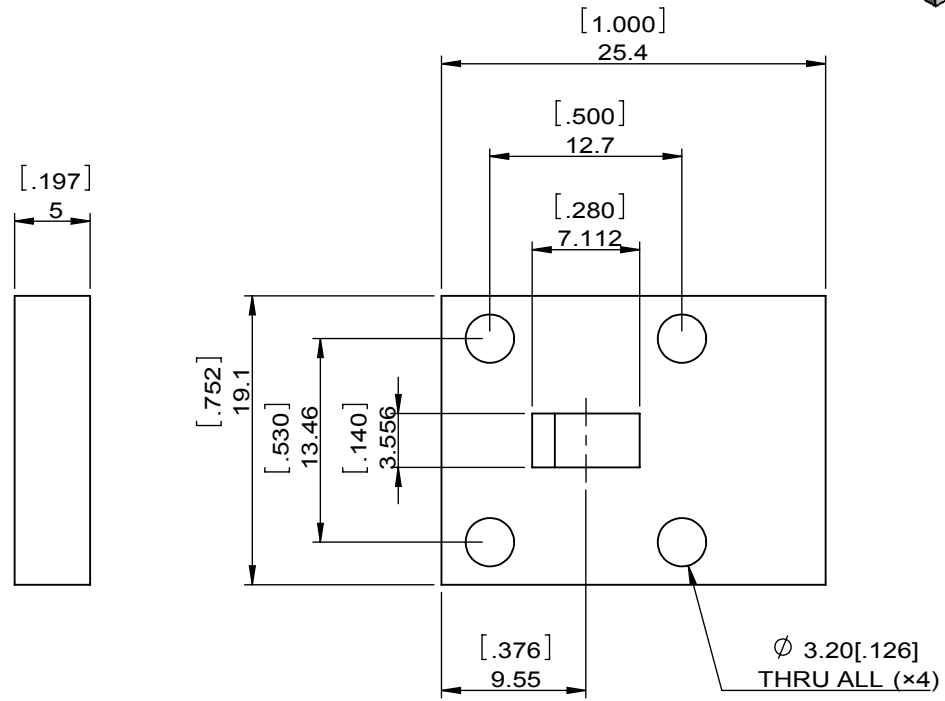
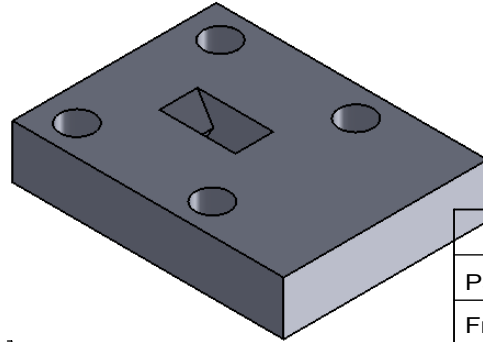


1	2
Document No.	QR4-700-T-003
REV.	A/0

3	4	5	6
REV.	DESCRIPTION	REVISOR	DATE
0		LJ.Zhang	05.30.2014
			APPROVED
			David



SPECIFICATIONS	
Part's Number	JIWR28-5-35K9T36K1
Frequency(GHz)	35.9~36.1
Direction	-
Insertion Loss(dB)MAX	0.7@25°C 0.8@-20°C~+80°C
Isolation(dB)MIN	19.0@25°C 18.0@-20°C~+80°C
Return Loss(dB)MIN	18.0@25°C 17.7@-20°C~+80°C
3rd IMD(dBc)MAX	-
Power FWD/REV/PK(Watt)	-
Operating Temperature(°C)	-20~+80
Storage Temperature(°C)	-40~+80
2nd/3rd Harmonic(dBc)	-
Termination/Attenuator(Watt/dB)	-
Tab(W×LG×THK)(mm[Inch])	-
Additional Notes	-

JQL JQL Electronic Inc				
MATERIAL:		DWG NO: JIWR28-5-35K9T36K1-		
SURFACE TREATMENT:		DWG BY:	LJ.Zhang	05.30.2014
DESCRIPTION: WAVE GUIDE ISOLATOR		CHK'D BY:		SACLE
		APP'V'D BY:		3:2
		Unit: mm[inch]	Tolerance: Liner: ±0.25 Anguar: ±0.5°	The First:
				A4



This document is the property of JQL Electronic Inc. It cannot be copied, duplicated, used for manufacturing purposes or communicated to third party as a whole or partly, without the written consent of JQL Electronic Inc.

A
B
C
D

A
B
C
D