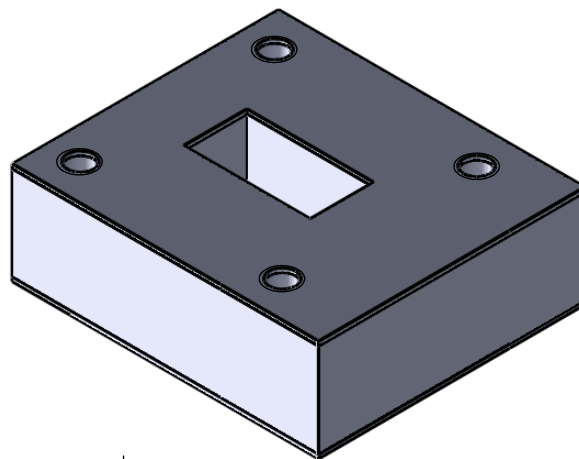
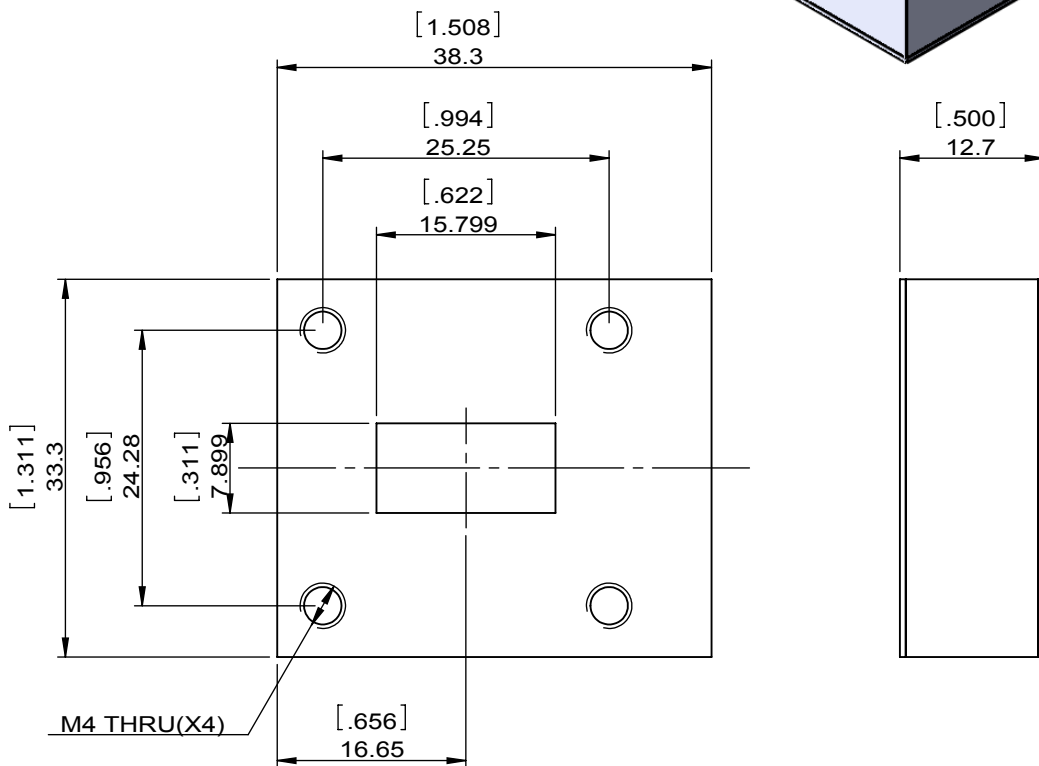


1		2		3		4		5		6	
Document No.		QR4-700-T-003		REV.		DESCRIPTION		REVISOR		DATE	
REV.		A/0		0				ZC.Wu		03.12.2015	
								APPROVED		David	



SPECIFICATIONS	
Part's Number	JIWR62-12.7D-14K0T14K5
Frequency(GHz)	14.000~14.500
Direction	-
Insertion Loss(dB)MAX	0.3@25°C 0.4@-40~+85°C
Isolation(dB)MIN	25.0@25°C 20.0@-40~+85°C
Return Loss(dB)MIN	21.0@25°C 19.0@-40~+85°C
3rd IMD(dBc)MAX	-
Power FWD/REV/PK(Watt)	10/5/-
Operating Temperature(°C)	-40~+85
Storage Temperature(°C)	-
2nd/3rd Harmonic(dBc)	-
Termination/Attenuator(Watt/dB)	-
Tab(W×LG×THK)(mm[Inch])	-
Additional Notes	-



JQL JQL Electronic Inc				
MATERIAL: AL		DWG NO: JIWR62-12.7D-14K0T14K5		
SURFACE TREATMENT: CHEM FILM		DWG BY:	ZC.Wu	03.12.2015
DESCRIPTION: WAVEGUIDE ISOLATOR		CHK'D BY:		SCALE
		APPV'D BY:		3:2
		Unit: mm[inch]	Tolerance: Liner: ±0.25 Anguar: ±0.5°	The First:
				A4



This document is the property of JQL Electronic Inc. It cannot be copied, duplicated, used for manufacturing purposes or communicated to third party as a whole or partly, without the written consent of JQL Electronic Inc.