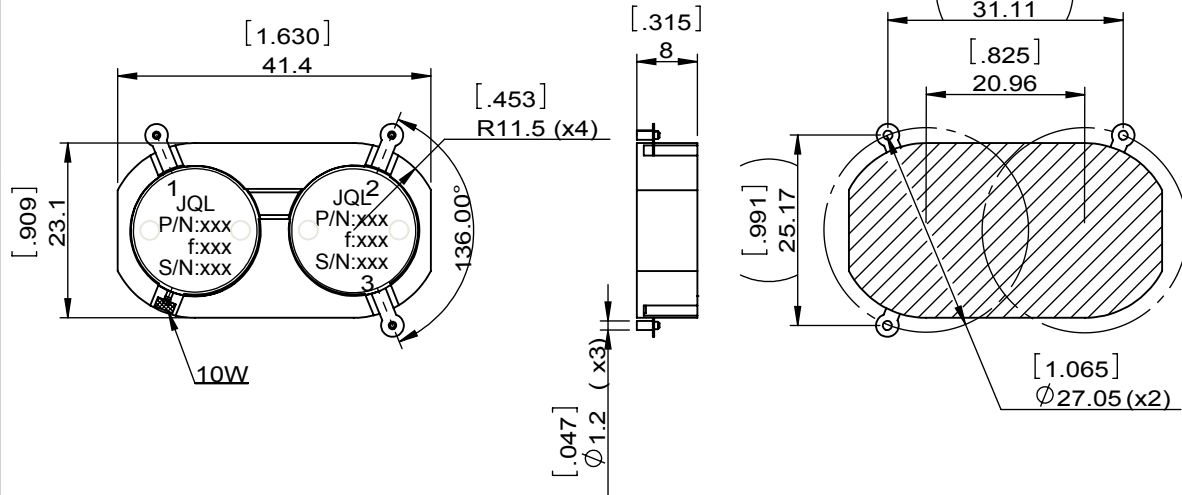
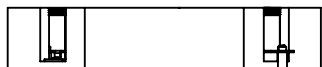
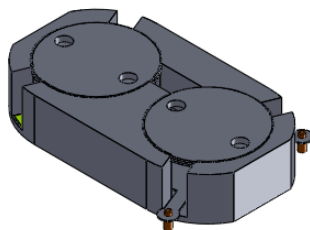


1		2		3		4		5		6	
Document No.	QR4-700-T-003	REV.	A/0	REV.	DESCRIPTION	REVISOR	DATE	APPROVED			
		0		ZC.Wu	11.26.2015	David					



SPECIFICATIONS	
Part's Number	JC2M2700T3700PQ5
Frequency(GHz)	2.700~3.700
Direction	CW
Insertion Loss(dB)MAX	S23:0.3 S21:0.6
Isolation(dB)MIN	19.0
Return Loss(dB)MIN	21.0
3rd IMD(dBc)MAX	-
Power FWD/REV/PK(Watt)	47/47/270
Operating Temperature(°C)	0~+55
Storage Temperature(°C)	-40~70
2nd/3rd Harmonic(dBc)	-
Termination/Attenuator(Watt/dB)	10/-
Tab(W×LG×THK)(mm[Inch])	
Additional Notes	1.Insertion phase variation:±20° 2.contact pin coplanarity is ±0.1[0.004]

JQL JQL Electronic Inc				
MATERIAL: Y15		DWG NO: JC2M2700T3700PQ5		
SURFACE TREATMENT: SILVER PLATING		DWG BY:	ZC.Wu	11.26.2015
DESCRIPTION: SMT CIRCULATOR		CHK'D BY:		SCALE
		APPV'D BY:		1:1
		Unit: mm[inch]	Tolerance: Liner: ±0.25 Anguar: ±0.5°	The First:
				A4



This document is the property of JQL Electronic Inc. It cannot be copied, duplicated, used for manufacturing purposes or communicated to third party as a whole or partly, without the written consent of JQL Electronic Inc.